

MSP430 Touch Pro Tool

This document describes the MSP430™ Touch Pro Tool and its features.

Contents

1	Overview	1
2	Hardware and Software Requirements	2
3	Launch MSP430 Touch Pro Tool	6

List of Figures

1	Hardware Connection	3
2	Capacitive Touch Measurement Method Definitions	4
3	User-Selectable Defines in TouchProTool_Demo_UART.h.....	5
4	Startup Screen	6
5	COM Port	7
6	Plot Type Selection	8
7	Oscilloscope Plot View	8
8	Bar Chart View	9
9	Pause/Un-Pause Button	9
10	Signal Selection and Alias	10
11	Display Chart Ranging (Axis Defaults Tab).....	11
12	Display Chart Styles (Plot Defaults Tab)	11
13	Data Frame Definition	12
14	Show Points Values.....	13

1 Overview

The MSP430 Touch Pro Tool is a PC-based tool that can be used to verify capacitive touch button, slider, and wheel designs. The tool receives and visualizes capacitive touch sensor data to help the user quickly and easily evaluate, diagnose, and tune button, slider, and wheel designs.

Features of the Touch Pro Tool include:

- Receive real-time data from a target board up to ten signals
- Points connected or bar chart display styles for viewing real-time data waveforms
- User-configurable automatic ranging or manual ranging of the y-axis
- Data recording and recall
- Print waveforms
- User-selectable individual signal or multiple signal waveform display

MSP430, LaunchPad, BoosterPack, Code Composer Studio, MSP432 are trademarks of Texas Instruments.
 OS X is a registered trademark of Apple Inc.
 IAR Embedded Workbench is a registered trademark of IAR Systems.
 Linux is a registered trademark of Linus Torvalds.
 All other trademarks are the property of their respective owners.

1.1 MSP430 Touch Pro Tool Revision

V1.00.00.00	Initial release
V1.10.00.00	Added Bar Chart, plot grid lines, plot signal aliases
V1.20.00.00	Modified to populate COM port list with all active ports
V1.30.00.00	Added support for OS X and Linux
V1.40.00.00	Added MSP430 demonstration project

2 Hardware and Software Requirements

The following items are required to run the Touch Pro Tool:

- PC with supported operating system
 - Microsoft Windows 7, 32 bit or 64 bit
 - Linux®, 32 bit or 64 bit (Ubuntu 12.04)
 - OS X® v10.10.1+, 64 bit
- USB 1.1 compatible input
- Java Development Kit JDK1.5 or greater

2.1 Software Drivers

To use the LaunchPad on Linux and MacOs, some drivers mustbe updated.

For OS X

1. Follow the instructions at <https://github.com/energia/Energia/wiki/Getting-Started>.
2. The LaunchPad COM port will be listed as "/dev/tty.uart-*" in the Touch Pro GUI
3. If a port "already in use" message is displayed when trying to open the LaunchPad serial port, update the permissions on the /var/lock file. Using the Apple Terminal, do the following:


```
sudo mkdir /var/lock
sudo chmod a+rw /var/lock
```

For Linux

1. Apply the LaunchPad cdc-acm kernel module fix from <https://github.com/capnm/LaunchPad>.
2. The LaunchPad registers as /dev/ttyACM*, but the RXTX serial port library only searches for /dev/ttyS*. Create a symlink as in the following example:
 - (a) Before plugging in the LaunchPad, do a "ls /dev" to get the current list of /dev/ttyACM* entries.
 - (b) Plug in the LaunchPad and do another "ls /dev". The new "/dev/ttyACM*" entry is the LaunchPad.
 - (c) Create a link to a new unused /dev/ttyS* entry. Also update the permissions for the files. For example:


```
ln -s /dev/ttyACM0 /dev/ttyS99
sudo chmod 0666 /dev/ttyS99
sudo chmod 0666 /dev/ttyACM0
```
 - (d) Open the /dev/ttyS99 port in the TouchPro GUI.

2.2 Hardware

The MSP430 Touch Pro Tool can be demonstrated with the MSP430 LaunchPad™ Value Line development kit ([MSP-EXP430G2](#)) together with the MSP430 Capacitive Touch BoosterPack™ ([430BOOST-CAPTOUCH](#)) daughterboard. Both are available for purchase from TI eStore:

LaunchPad: <https://estore.ti.com/Product3.aspx?ProductId=2031>

BoosterPack: <https://estore.ti.com/430BOOST-SENSE1-Capacitive-Touch-BoosterPack-P2361C42.aspx>

The LaunchPad kit connects to a PC or laptop with a mini-USB cable, which is provided with the LaunchPad (see [Figure 1](#)). Make sure that all of the jumpers are connected in their default configuration.



Figure 1. Hardware Connection

2.3 Demonstration Projects

The CCS and IAR source code for the demonstration projects is available in the installation package.

- The TouchProTool_Demo_Bit_Banging and TouchProTool_Demo_UART projects require Code Composer Studio™ (CCS) version 5.3 or newer or IAR Embedded Workbench® (IAR) version 5.50 or newer.
- The TouchProTool_Demo_UART_MSP432 project requires CCS version 6.1 or newer and IAR Embedded Workbench® for ARM version 7.40.3 or newer.

The CCS and IAR projects directory contains files for three code examples.

The TouchProTool_Demo_Bit_Banging and TouchProTool_Demo_UART examples support the MSP430G2553 microcontroller.

- The TouchProTool_Demo_Bit_Banging example supports the MSP430G2xx2 and MSP430G2xx3 Value Line MSP430 microcontrollers.
- The TouchProTool_Demo_UART example supports only MSP430G2xx3 Value Line MSP430 microcontrollers, because it requires a UART interface. The UART module should be wired according to the instructions in the LaunchPad documentation.

The TouchProTool_Demo_UART_MSP432 example supports only MSP432™ microcontrollers.

To quickly evaluate the example projects, load the selected project into a CCS or IAR workspace. Then connect a LaunchPad containing a compatible MSP controller to the host PC and download the firmware.

2.3.1 TouchProTool_Demo_UART_MSP432

This software is available in the Touch Pro GUI installation package and the MSP-EXP432P401R Software Examples package, or it is more easily accessible through MSPWare. The software was developed using CCS v6.1.0.00104 and IAR Embedded Workbench for ARM v7.40.3.8938 and can be evaluated using either IDE.

The TouchProTool_Demo_UART_MSP432 example shows how to use the capacitive touch enabled I/Os on the MSP432 MCUs with the Capacitive Touch Software (CTS) Library for MSP432 and the 430BOOST-SENSE1 BoosterPack.

NOTE: The CTS Library provided for MSP432 is not meant to be a complete solution for capacitive touch application development. Users wishing to develop complex capacitive touch applications are encouraged to add on to or modify the existing CTS Library. For more information on the CTS Library, see the *Capacitive Touch Software Library for MSP432 Programmer's Guide* ([SLAA673](#)).

The example also provides a simple framework for tuning capacitive touch elements and sensors with the Touch Pro GUI. The application code for the example is organized in multiple files. [Table 1](#) summarizes the main application files for the TouchProTool_Demo_UART_MSP432 example.

Table 1. TouchProTool_Demo_UART_MSP432 Files

Name	Description
TouchProTool_Demo_UART.c	Main application file that initializes the system, calls CTS Library measurement functions, and handles UART communication
TouchProTool_Demo_UART.h	Main application header containing definitions that control system initialization and application mode
structure.c	Source file used to configure capacitive touch elements and sensors
structure.h	Header file containing declare capacitive touch elements and sensors and select capacitive measurement method

The example can be built to measure the capacitive elements using all of the methods supported by the MSP432 CTS Library. This includes hardware configurations for both the relaxation oscillator (RO) method and the fast relaxation oscillator (fRO) method. The user can select which measurement mode is used by changing which measurement method definition is uncommented in the structure.h file. [Figure 2](#) shows these definitions.

```

//***** Choosing a Measurement Method *****/
// These variables are references to the definitions found in structure.c and
// must be generated per the application.
// possible values for the method field

// MSP432 OSCILLATOR DEFINITIONS
#define RO_CTIO_TA2_WDTA      73
//#define RO_CTIO_TA2_TA3      74

// MSP432 FAST RO DEFINITIONS
//#define fRO_CTIO_TA2_TA3     23

```

Figure 2. Capacitive Touch Measurement Method Definitions

The example can also be built to display either the change in capacitive element measurements or the wheel touch position on a PC in the Touch Pro GUI. In addition, the example provides the option to configure the system to have a master clock frequency of 1 MHz, 4 MHz, 8 MHz, 16 MHz, 24 MHz, or 48 MHz. These settings can be changed by modifying the preprocessor defines in the TouchProTool_Demo_UART.h file (see [Figure 3](#)) and then rebuilding the project.

```

!!! \brief Selectable System Clock Frequency
!!!     VALID VALUES: 1000000, 4000000, 8000000, 16000000, 24000000, 48000000
!!!
#define __SYSTEM_CLOCK 1000000

!!! \brief If defined, element delta counts displayed on GUI,
!!!     otherwise, wheel position is displayed
!!!
// #define Custom_Counts

```

Figure 3. User-Selectable Defines in TouchProTool_Demo_UART.h

Selecting a master clock frequency of 24 MHz or 48 MHz increases the frequency of the SMCLK in the example, which affects the tuning of the capacitive elements and wheel sensor when using the fRO measurement method. These settings demonstrate how the fRO method might be used to obtain better sensitivity on capacitive touch structures at high measurement frequencies.

NOTE: For more information on the RO and fRO measurement methods, see the *Capacitive Touch Software Library for MSP432 Programmer's Guide* ([SLAA673](#)).

3 Launch MSP430 Touch Pro Tool

The tool can be launched either by double clicking the touchpro.jar file in the install directory or by selecting the tool in the Windows Start menu.

3.1 Main Window

When the Touch Pro Tool runs, the screen shown in [Figure 4](#) is displayed.

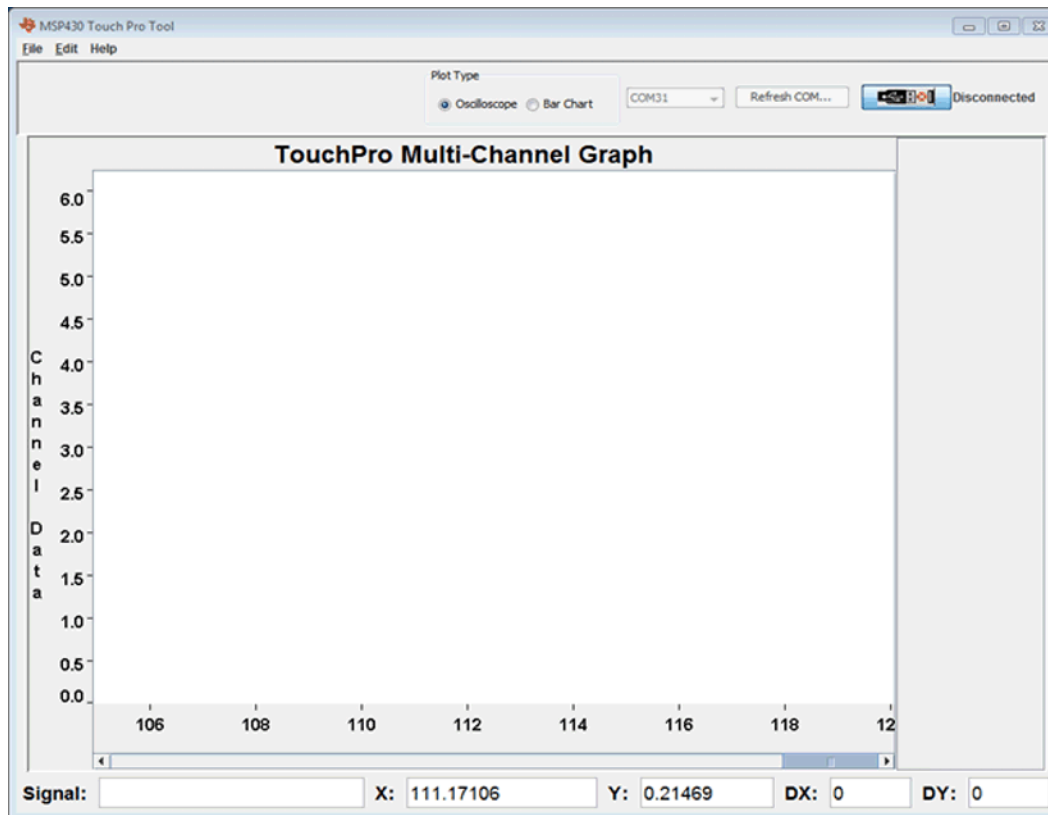


Figure 4. Startup Screen

The main window (see [Figure 4](#)) is divided into four working zones:

- Main Menu: File, Edit, and Help
- Plot type selection and COM Communication: Select COM, Refresh COM, Pause/Un-pause buttons
- Display Area: Data display canvas
- Data Information: Signal, X-Value, Y-Value, and distance between two points

3.2 Communication Setup

To select the COM port to which the LaunchPad is attached, click the Select COM button. In the dropdown menu, select the appropriate COM port for the target device (see [Figure 5](#)). If the COM port is not listed in the dropdown menu, click the Refresh COM button and then click Select COM again.

NOTE: More than one COM port may be listed in the COM window. To identify the appropriate COM port for the Touch Pro Tool:

Windows: Run Windows Device Manager and select the COM port with the name *MSP430 Application UART*.

OS X: Select the port that matches `"/dev/tty.uart-*`.

Linux: Select the `/dev/S*` link that was created by following the instructions in [Section 2.1](#).

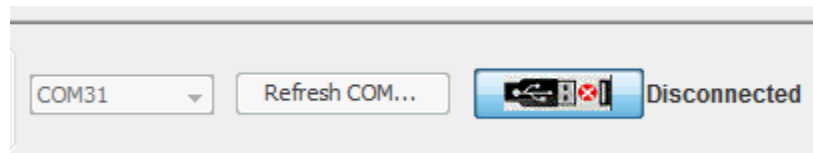


Figure 5. COM Port

NOTE: If the COM port cannot be opened, a warning is shown.

3.2.1 COM Open

When the COM port is open, the Select COM and Refresh COM buttons are disabled, and the Pause/Un-Pause button is enabled. A legend with checkboxes for selecting and deselecting signals is also displayed.

The tool starts to display data curves when the COM port opens. The data flow can be paused and un-paused without closing the COM port.

3.2.2 COM Closed

The COM port can be closed in two ways, either by selecting to open a history file or by exiting the tool.

Opening a history file (see [Section 3.4.2.2](#)) closes the COM port, enables the Select COM and Refresh COM buttons, and disables the Pause/Un-Pause button.

With the COM port closed, the tool stops displaying data.

3.2.3 Pause/Un-Pause

The data flow can be paused for reviewing or un-paused by clicking the Pause/Un-Pause button.

3.2.4 Refresh COM

The Refresh COM button repopulates the COM dropdown box with the available COM ports. This allows the user to plug in the USB cable while the Touch Pro Tool is open. The Refresh COM button is disabled when a COM port is open, and it is enabled when the COM port is closed.

3.3 Plot Types

The tool can display real-time data in two different plot formats, Oscilloscope or Bar Chart (see [Figure 6](#)).

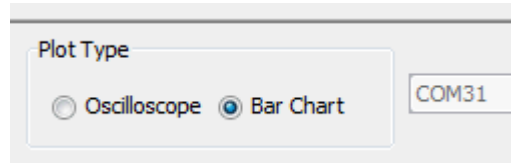


Figure 6. Plot Type Selection

3.3.1 Oscilloscope View

The Oscilloscope view (see [Figure 7](#)) displays data for each signal as a continuous line on the plot.

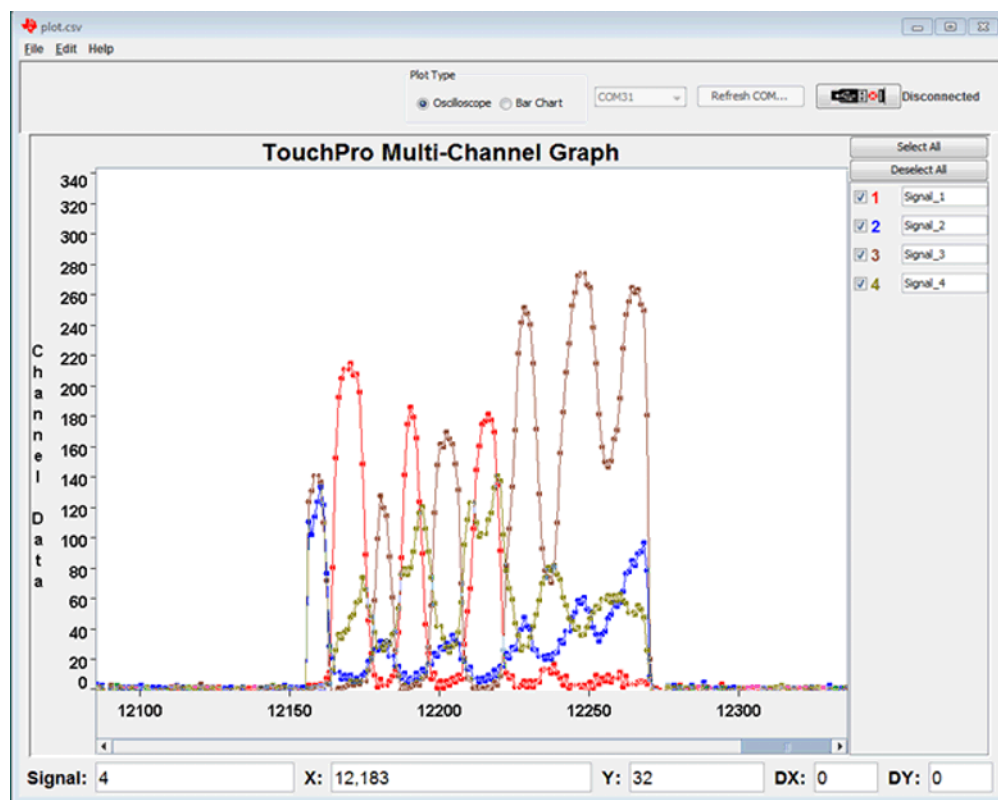


Figure 7. Oscilloscope Plot View

3.3.2 Bar Chart View

The Bar Chart view (see [Figure 8](#)) displays the most recent delta value for each signal as a bar. It also provides the capability to set a manual threshold value for the displayed signal.

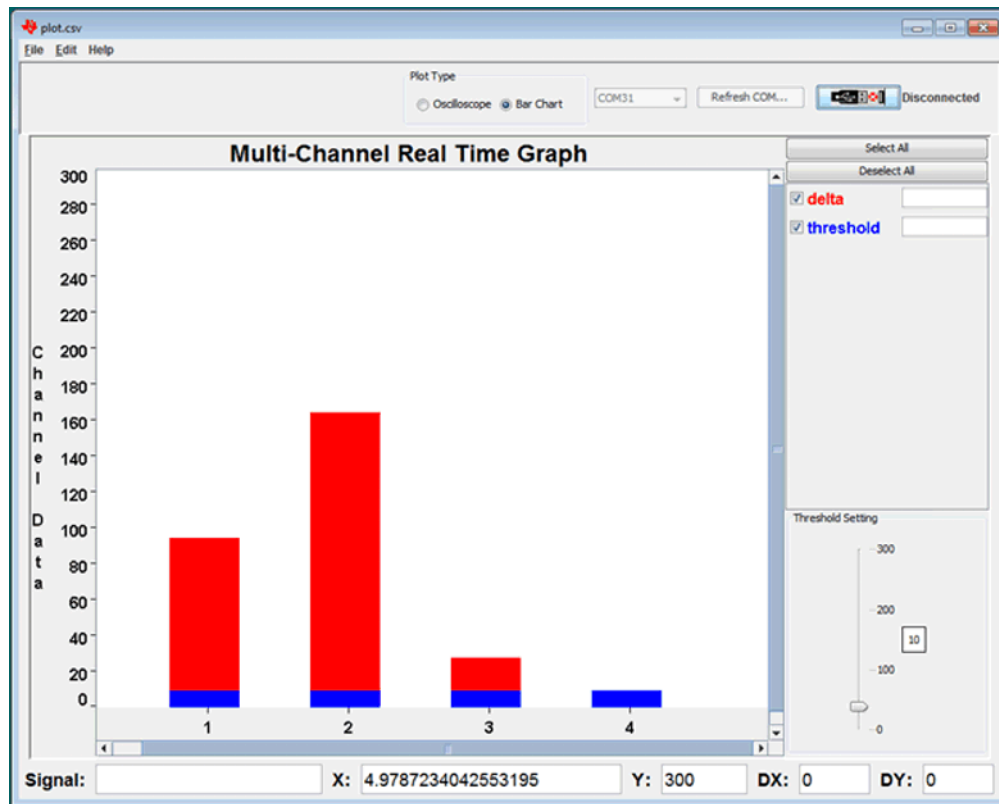


Figure 8. Bar Chart View

3.4 Data Types

In the Oscilloscope view, data can be viewed in real-time or historical mode. In Bar Chart view, only real-time data can be viewed. In real-time mode, the tool displays data received from the COM port in real time. In historical data mode, data that was previously saved to a CSV file is displayed (see [Section 3.4.2.2](#) for details).

3.4.1 Real-Time Data Display

The real-time data display, supported both in Oscilloscope and Bar Chart views, allows the user to view data in real time. When COM port opens, all signals that are sent from the target board are displayed. Data curves or bars can be observed and are displayed in real time in the display area (see [Figure 7](#) and [Figure 8](#)).

Click on the Pause/Un-Pause button (see [Figure 9](#)) to switch between stopping and starting of plotting data. In the pause mode, data acquisition and data plotting are both stopped.

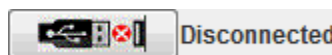


Figure 9. Pause/Un-Pause Button

3.4.2 Historical Data Display

Historical data can be recalled for viewing and analyzing from saved CSV type data files. Historical data display is only supported in the Oscilloscope view.

3.4.2.1 Save Data

To save data, click File→Save or File→Save As. Data can be saved in real-time mode or in pause mode. Data is saved in CSV formatted files.

3.4.2.2 Recall Data

To recall data, click File→Open and select the directory and the desired CSV data file. Historical data can be recalled in either real-time mode or pause mode.

When a data file is opened, the tool automatically closes the COM port. The display area is cleared of all existing data, and the historical data is displayed.

3.5 Signal Selection

The display of each received signal can be individually turned on or off. To turn on the display of a signal, click the checkbox for that signal (see Figure 10). To turn off the display of a signal, clear the checkbox. To select all signals, click Select All. To deselect all signals, click Deselect All. When the COM port is opened, all signals sent by the target are automatically selected.

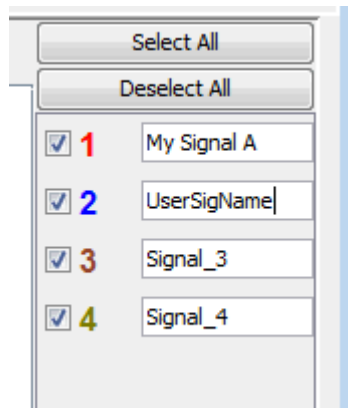


Figure 10. Signal Selection and Alias

3.6 Signal Alias

Each plot signal can be assigned a user-defined alias. This can be helpful to map signal numbers to meaningful identifiers (see Figure 10).

3.7 X-Axis and Y-Axis Description

- Y-axis points are data values
- X-axis points are index counts

The y-axis can be labeled. Click Edit→Display Defaults→Axis Defaults and then enter the labels for *Y Title* (see Figure 11).

3.7.1 Automatic Ranging and Manual Ranging

If the Y-axis data points vary widely, the values that are displayed can be restricted to a user-defined range. Click Edit→Display Defaults→Axis Defaults and select Manual Ranging Y-Axis (see Figure 11). Enter a minimum Y value and a maximum Y value. The changes to the Y-axis are seen the next time the COM port opens.

The Y-Axis Boundary Settings can be set either during real-time data flow or when the data flow is paused. The manual range's minimum and maximum values are stored when the tool closes. However, Auto Ranging Y-Axis is the default setting that is used by the tool when it is opened. To apply the manual range values to the Y-axis after restarting the tool, select Manual Ranging Y-Axis again.

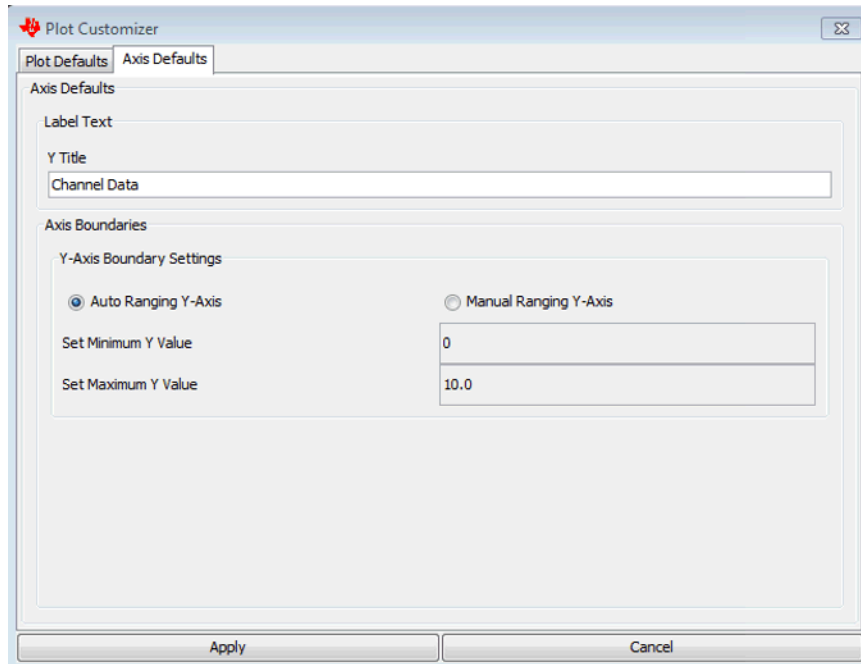


Figure 11. Display Chart Ranging (Axis Defaults Tab)

3.8 Display Chart Styles

Two styles of display charts are available: Points Connected and Bar Chart. To select the chart type, click Edit→Display Defaults→Plot Defaults and select either Points Connected or Bar (see [Figure 12](#)).

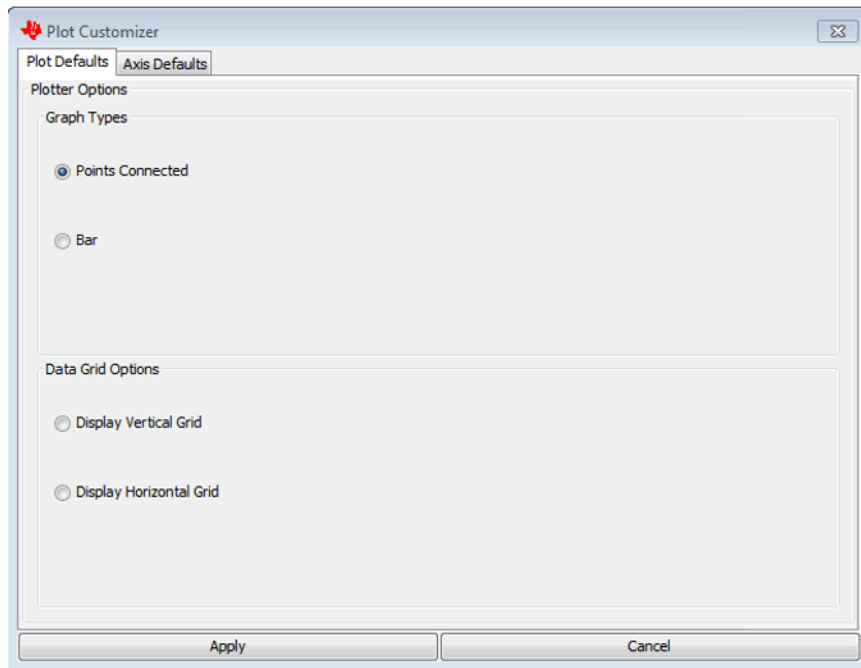


Figure 12. Display Chart Styles (Plot Defaults Tab)

3.9 Display Chart Grid Lines

To display the horizontal and vertical grid lines, click Edit→Display Defaults→Plot Defaults to open the window shown in [Figure 12](#).

3.10 Data Protocol Between MCU and Touch Pro Tool

For the Touch Pro Tool to display data, the user application must send data in a defined format. The data frame definition of the UART protocol that the Touch Pro Tool expects from the target MCU is shown in [Figure 13](#).

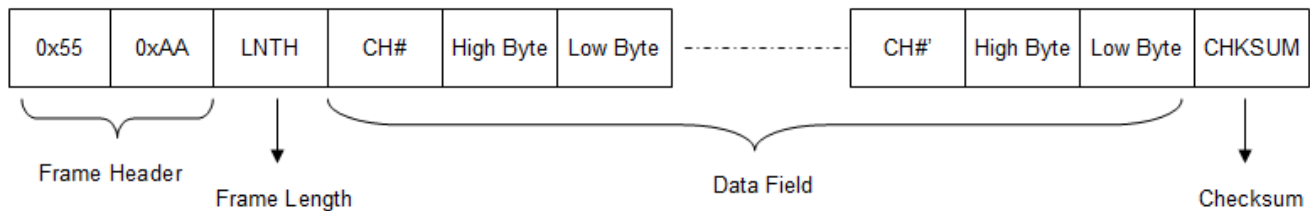


Figure 13. Data Frame Definition

Frame Header: This is a fixed value. The value is always 0x55 and 0xAA.

Length: Indicates total number of bytes following the frame header bytes.

$$\text{Length} = 3 \times \text{Signal Numbers} + 1.$$

For example, when there is only one signal of data to send, the length is:

$$3 \times 1 + 1 = 4$$

When there are five signals of data to send, the length is:

$$3 \times 5 + 1 = 16$$

Each signal number is multiplied by 3 to account for signal number, high order byte, and low order byte. The 1 is then added to the length to account for the checksum byte.

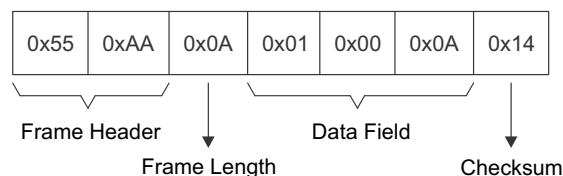
CH#: Valid signal numbers range from 0 to 9. That means a total of 10 signals can be observed by the Touch Pro Tool.

High Byte: High 8-bit data of the signal data.

Low Byte: Low 8-bit data of the signal data.

CHKSUM: Low byte of the value derived from the sum of header bytes, frame length, signal number, and data bytes. The tool ignores the data package if the checksum is wrong.

For example, if the data frame is the following:



$$\text{Data Frame total} = 55 + \text{AA} + 0\text{A} + 01 + 0 + 0\text{A} = 114$$

$$\text{Checksum} = 14$$

3.11 Waveform Operations

The following operations can be performed on the displayed waveforms:

- Zoom in and zoom out
- Show point values
- Show distance between points
- Print

3.11.1 Zoom In and Zoom Out

Zoom in and zoom out are possible while data flow is paused or during data recall.

To zoom into a portion of a waveform, press and hold the left mouse button and draw a box from *top to bottom* around the area of interest. To zoom out partially, press and hold the left mouse button and draw a box from *bottom to top* around the area of interest. To zoom out fully, click the right mouse button.

3.11.2 Show Points Values

The X and Y points value is displayed in the Data Information zone of the tool. When the cursor is over a point in the display, the corresponding signal number, X value, and Y value are listed in the boxes labeled Signal, X, and Y, respectively. [Figure 14](#) shows an example point value.

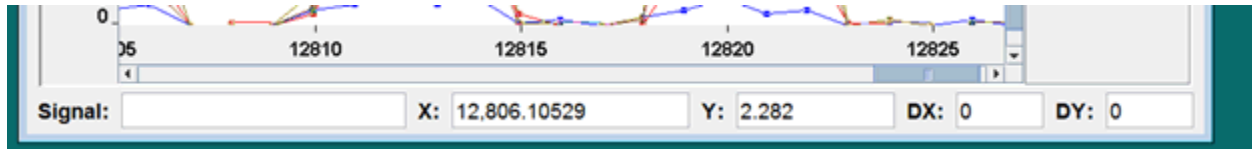


Figure 14. Show Points Values

3.11.3 Show Difference Between Points

To calculate the difference between two point values: select the first point, press and hold the right mouse button, drag the line that appears to the second point, and release the button.

The boxes labeled DX and DY (see [Figure 14](#)) show the differences between the X and Y coordinates, respectively, of the two points.

3.11.4 Print Waveforms

To print the waveforms that are shown in the display area of the tool, pause the data flow and then click File→Print.

3.11.5 Clear Display

To clear the display of waveforms, click Edit→Clear. The display can be cleared in real time or when data flow is paused.

3.12 Reset Axes

To reset the axes after zooming in, click Edit→Reset Axes. The display resets the x and y axes values to the values prior to the zoom in.

Revision History

Changes from April 30, 2015 to October 2, 2015	Page
• Added tool revision V1.40.00.00 information in Section 1.1 , <i>MSP430 Touch Pro Tool Revision</i>	2
• Updated the description in Section 2.3 , <i>Demonstration Projects</i>	3
• Added Section 2.3.1 , <i>TouchProTool_Demo_UART_MSP432</i>	3

NOTE: Page numbers for previous revisions may differ from page numbers in the current version.

IMPORTANT NOTICE

Texas Instruments Incorporated and its subsidiaries (TI) reserve the right to make corrections, enhancements, improvements and other changes to its semiconductor products and services per JESD46, latest issue, and to discontinue any product or service per JESD48, latest issue. Buyers should obtain the latest relevant information before placing orders and should verify that such information is current and complete. All semiconductor products (also referred to herein as "components") are sold subject to TI's terms and conditions of sale supplied at the time of order acknowledgment.

TI warrants performance of its components to the specifications applicable at the time of sale, in accordance with the warranty in TI's terms and conditions of sale of semiconductor products. Testing and other quality control techniques are used to the extent TI deems necessary to support this warranty. Except where mandated by applicable law, testing of all parameters of each component is not necessarily performed.

TI assumes no liability for applications assistance or the design of Buyers' products. Buyers are responsible for their products and applications using TI components. To minimize the risks associated with Buyers' products and applications, Buyers should provide adequate design and operating safeguards.

TI does not warrant or represent that any license, either express or implied, is granted under any patent right, copyright, mask work right, or other intellectual property right relating to any combination, machine, or process in which TI components or services are used. Information published by TI regarding third-party products or services does not constitute a license to use such products or services or a warranty or endorsement thereof. Use of such information may require a license from a third party under the patents or other intellectual property of the third party, or a license from TI under the patents or other intellectual property of TI.

Reproduction of significant portions of TI information in TI data books or data sheets is permissible only if reproduction is without alteration and is accompanied by all associated warranties, conditions, limitations, and notices. TI is not responsible or liable for such altered documentation. Information of third parties may be subject to additional restrictions.

Resale of TI components or services with statements different from or beyond the parameters stated by TI for that component or service voids all express and any implied warranties for the associated TI component or service and is an unfair and deceptive business practice. TI is not responsible or liable for any such statements.

Buyer acknowledges and agrees that it is solely responsible for compliance with all legal, regulatory and safety-related requirements concerning its products, and any use of TI components in its applications, notwithstanding any applications-related information or support that may be provided by TI. Buyer represents and agrees that it has all the necessary expertise to create and implement safeguards which anticipate dangerous consequences of failures, monitor failures and their consequences, lessen the likelihood of failures that might cause harm and take appropriate remedial actions. Buyer will fully indemnify TI and its representatives against any damages arising out of the use of any TI components in safety-critical applications.

In some cases, TI components may be promoted specifically to facilitate safety-related applications. With such components, TI's goal is to help enable customers to design and create their own end-product solutions that meet applicable functional safety standards and requirements. Nonetheless, such components are subject to these terms.

No TI components are authorized for use in FDA Class III (or similar life-critical medical equipment) unless authorized officers of the parties have executed a special agreement specifically governing such use.

Only those TI components which TI has specifically designated as military grade or "enhanced plastic" are designed and intended for use in military/aerospace applications or environments. Buyer acknowledges and agrees that any military or aerospace use of TI components which have **not** been so designated is solely at the Buyer's risk, and that Buyer is solely responsible for compliance with all legal and regulatory requirements in connection with such use.

TI has specifically designated certain components as meeting ISO/TS16949 requirements, mainly for automotive use. In any case of use of non-designated products, TI will not be responsible for any failure to meet ISO/TS16949.

Products

Audio	www.ti.com/audio
Amplifiers	amplifier.ti.com
Data Converters	dataconverter.ti.com
DLP® Products	www.dlp.com
DSP	dsp.ti.com
Clocks and Timers	www.ti.com/clocks
Interface	interface.ti.com
Logic	logic.ti.com
Power Mgmt	power.ti.com
Microcontrollers	microcontroller.ti.com
RFID	www.ti-rfid.com
OMAP Applications Processors	www.ti.com/omap
Wireless Connectivity	www.ti.com/wirelessconnectivity

Applications

Automotive and Transportation	www.ti.com/automotive
Communications and Telecom	www.ti.com/communications
Computers and Peripherals	www.ti.com/computers
Consumer Electronics	www.ti.com/consumer-apps
Energy and Lighting	www.ti.com/energy
Industrial	www.ti.com/industrial
Medical	www.ti.com/medical
Security	www.ti.com/security
Space, Avionics and Defense	www.ti.com/space-avionics-defense
Video and Imaging	www.ti.com/video

TI E2E Community

e2e.ti.com