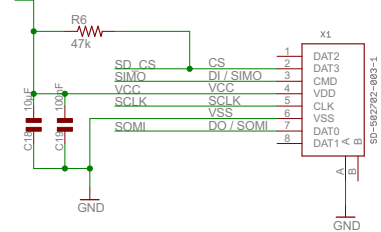


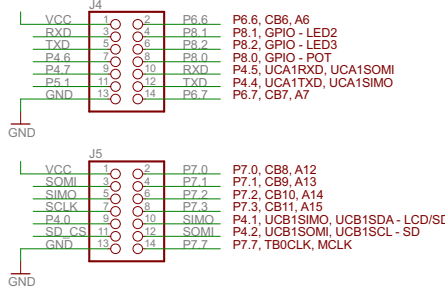
microSD Memory Card Interface



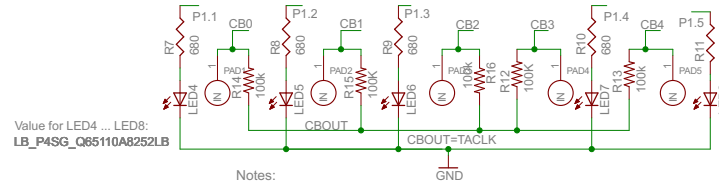
F5529 Pin Access Headers

P4.5, UCA1RXD, UCA1SOMI
P4.4, UCA1TXD, UCA1SIMO
P4.6, GPIO - RF
P4.7, GPIO - RF
P5.1, A9, VREF-, VeREF-

P4.2, UCB1SOMI, UCB1SCL - SD
P4.1, UCB1SIMO, UCB1SDA - LCD/SD
P4.3, UCB1CLK, UCA1STE - LCD/SD
P4.0, UCB1STE, UCA1CLK - RF
P3.7, TB0OUTH, SVMOUT - SD

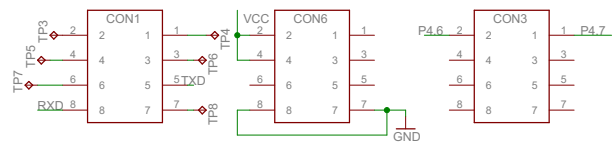


Touch Pads



Notes:
1- Keep touch pad R's & LEDs near pads; clean routing to MSP430
2- Functionality to be as clear as possible in SILK of layout

CC430 EM Interface Headers



eZEVm F5529 Cap Touch, miniSD, RF

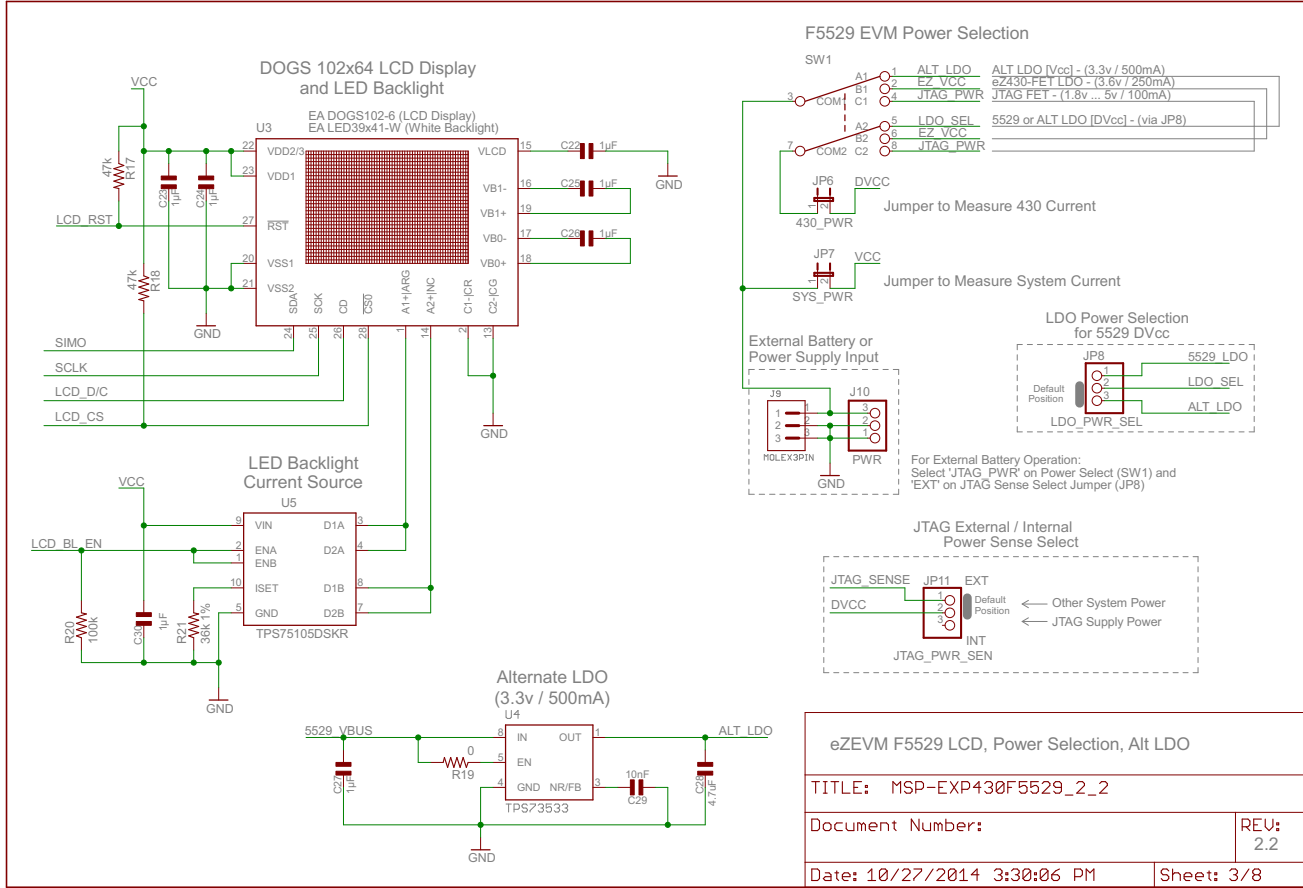
TITLE: MSP-EXP430F5529_2_2

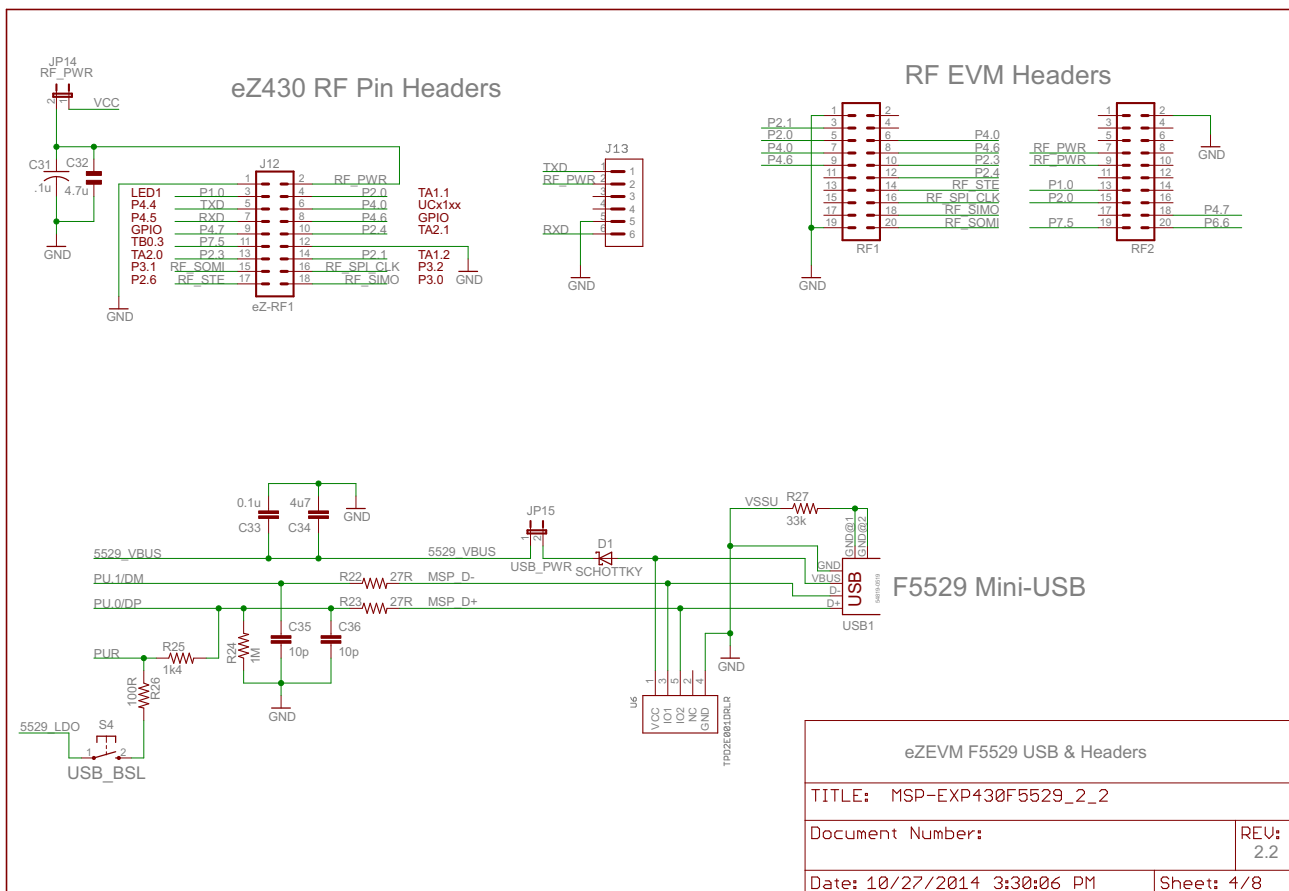
Document Number:

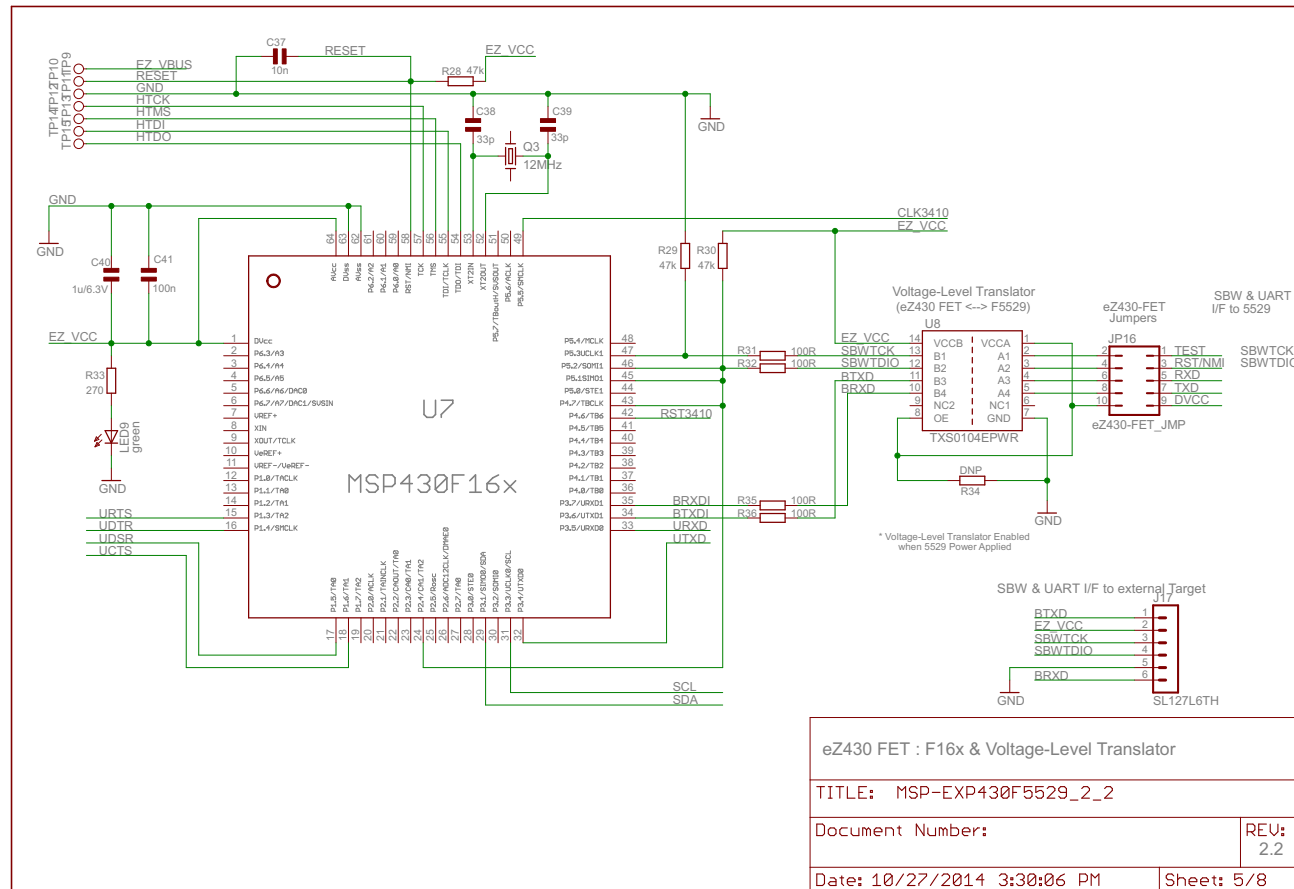
REU:
2.2

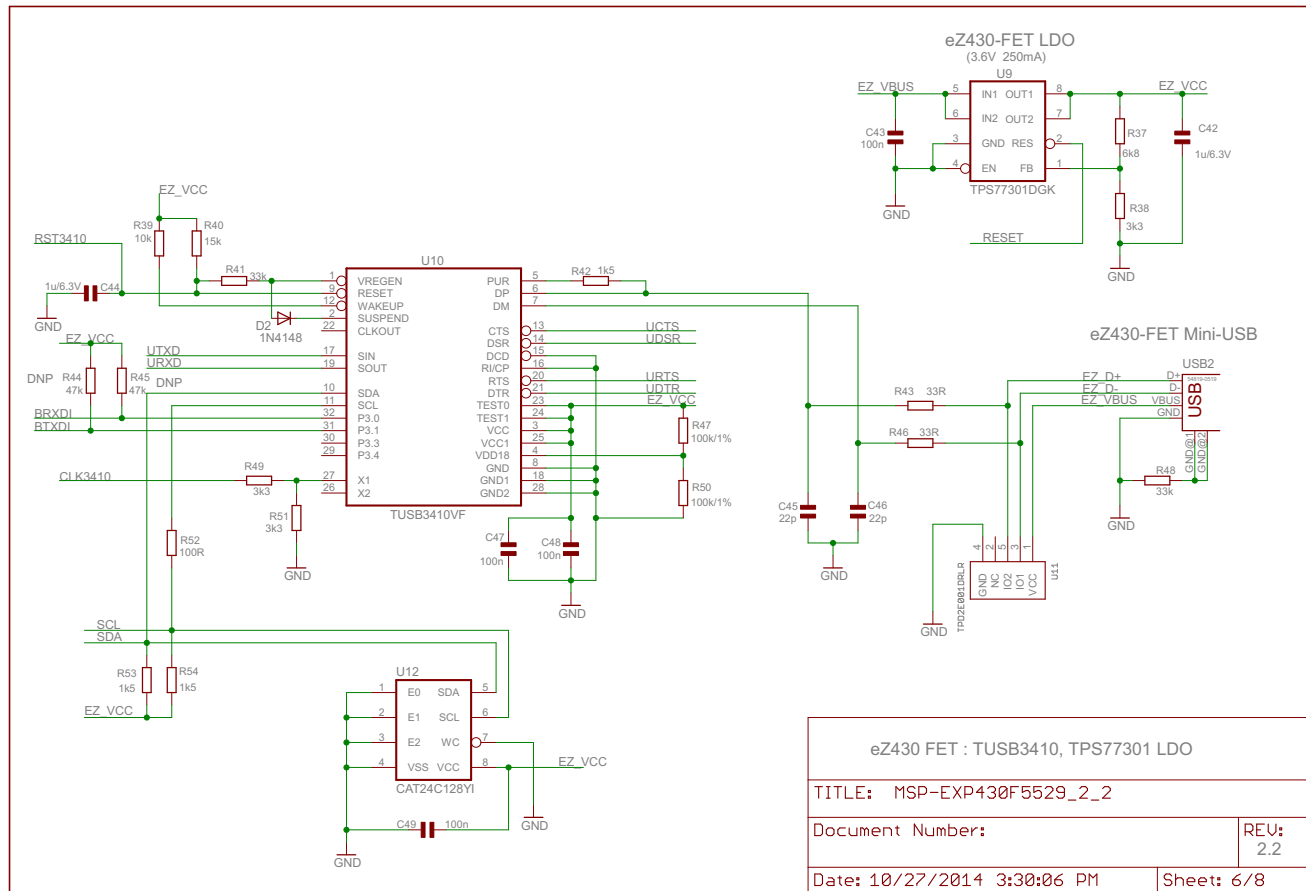
Date: 10/27/2014 3:30:06 PM

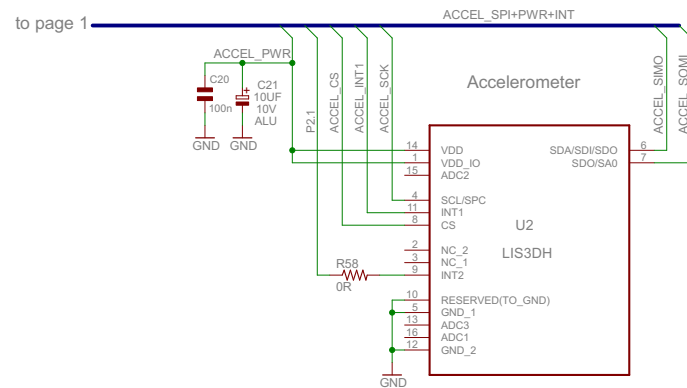
Sheet: 2/8











eZVM F5529 Accel, Accel ADC

TITLE: MSP-EXP430F5529_2_2

Document Number:

REV:
2.2

Date: 10/27/2014 3:30:06 PM

Sheet: 7/8

Revision History

PCB Revision 2.0
(See PCB Revision 1.0 for Previous Revision History)

09.26.2010

Added e2430-FET to F5529 Voltage-Level Translator (TXS0104E).
Added Alternate LDO (TPS73533) Option for Vcc System Power.
Added D0G5 102x64 Dot-Matrix LCD and White LED Backlight.
Added LED Backlight Driver (TPS75105).
Modified power selection for Vcc and DVcc.
Removed extra headers and prototype area.
Extensive PCB Layout Rearrangement.
Modified RF Headers for Additional EVM Capability.

PCB Revision 2.1

12.04.2012

Replaced POT1 with another type.

PCB Revision 2.2

27.10.2014

Schematics:
Accelerometer U2 (formerly CMA3000-D01) replaced by ST LIS3DH
INT2 of LIS3DH connected to P2.1 (via 0R resistor)
LED4 ... LED8 new type (different case):
Osram LBP4SG-S2U1-35-1 Article number: Q65110A8252

TITLE: MSP-EXP430F5529_2_2		
Document Number:		REV: 2.2
Date: 10/27/2014 3:30:06 PM	Sheet: 8/8	