

# **SYS/BIOS 6.33 Getting Started Guide**

December 21, 2011



## IMPORTANT NOTICE

Texas Instruments Incorporated and its subsidiaries (TI) reserve the right to make corrections, modifications, enhancements, improvements, and other changes to its products and services at any time and to discontinue any product or service without notice. Customers should obtain the latest relevant information before placing orders and should verify that such information is current and complete. All products are sold subject to TI's terms and conditions of sale supplied at the time of order acknowledgment.

TI warrants performance of its hardware products to the specifications applicable at the time of sale in accordance with TI's standard warranty. Testing and other quality control techniques are used to the extent TI deems necessary to support this warranty. Except where mandated by government requirements, testing of all parameters of each product is not necessarily performed.

TI assumes no liability for applications assistance or customer product design. Customers are responsible for their products and applications using TI components. To minimize the risks associated with customer products and applications, customers should provide adequate design and operating safeguards.

TI does not warrant or represent that any license, either express or implied, is granted under any TI patent right, copyright, mask work right, or other TI intellectual property right relating to any combination, machine, or process in which TI products or services are used. Information published by TI regarding third-party products or services does not constitute a license from TI to use such products or services or a warranty or endorsement thereof. Use of such information may require a license from a third party under the patents or other intellectual property of the third party, or a license from TI under the patents or other intellectual property of TI.

Reproduction of TI information in TI data books or data sheets is permissible only if reproduction is without alteration and is accompanied by all associated warranties, conditions, limitations, and notices. Reproduction of this information with alteration is an unfair and deceptive business practice. TI is not responsible or liable for such altered documentation. Information of third parties may be subject to additional restrictions.

Resale of TI products or services with statements different from or beyond the parameters stated by TI for that product or service voids all express and any implied warranties for the associated TI product or service and is an unfair and deceptive business practice. TI is not responsible or liable for any such statements.

TI products are not authorized for use in safety-critical applications (such as life support) where a failure of the TI product would reasonably be expected to cause severe personal injury or death, unless officers of the parties have executed an agreement specifically governing such use. Buyers represent that they have all necessary expertise in the safety and regulatory ramifications of their applications, and acknowledge and agree that they are solely responsible for all legal, regulatory and safety-related requirements concerning their products and any use of TI products in such safety-critical applications, notwithstanding any applications-related information or support that may be provided by TI. Further, Buyers must fully indemnify TI and its representatives against any damages arising out of the use of TI products in such safety-critical applications.

TI products are neither designed nor intended for use in military/aerospace applications or environments unless the TI products are specifically designated by TI as military-grade or "enhanced plastic." Only products designated by TI as military-grade meet military specifications. Buyers acknowledge and agree that any such use of TI products which TI has not designated as military-grade is solely at the Buyer's risk, and that they are solely responsible for compliance with all legal and regulatory requirements in connection with such use.

TI products are neither designed nor intended for use in automotive applications or environments unless the specific TI products are designated by TI as compliant with ISO/TS 16949 requirements. Buyers acknowledge and agree that, if they use any non-designated products in automotive applications, TI will not be responsible for any failure to meet such requirements.

Following are URLs where you can obtain information on other Texas Instruments products and application solutions:

<b>Products</b>		<b>Applications</b>	
Amplifiers	<a href="http://amplifier.ti.com">amplifier.ti.com</a>	Audio	<a href="http://www.ti.com/audio">www.ti.com/audio</a>
Data Converters	<a href="http://dataconverter.ti.com">dataconverter.ti.com</a>	Automotive	<a href="http://www.ti.com/automotive">www.ti.com/automotive</a>
DLP® Products	<a href="http://www.dlp.com">www.dlp.com</a>	Broadband	<a href="http://www.ti.com/broadband">www.ti.com/broadband</a>
DSP	<a href="http://dsp.ti.com">dsp.ti.com</a>	Digital Control	<a href="http://www.ti.com/digitalcontrol">www.ti.com/digitalcontrol</a>
Clocks and Timers	<a href="http://www.ti.com/clocks">www.ti.com/clocks</a>	Military	<a href="http://www.ti.com/military">www.ti.com/military</a>
Interface	<a href="http://interface.ti.com">interface.ti.com</a>	Optical Networking	<a href="http://www.ti.com/opticalnetwork">www.ti.com/opticalnetwork</a>
Logic	<a href="http://logic.ti.com">logic.ti.com</a>	Security	<a href="http://www.ti.com/security">www.ti.com/security</a>
Power Mgmt	<a href="http://power.ti.com">power.ti.com</a>	Telephony	<a href="http://www.ti.com/telephony">www.ti.com/telephony</a>
Microcontrollers	<a href="http://microcontroller.ti.com">microcontroller.ti.com</a>	Video & Imaging	<a href="http://www.ti.com/video">www.ti.com/video</a>
RFID	<a href="http://www.ti-rfid.com">www.ti-rfid.com</a>	Wireless	<a href="http://www.ti.com/wireless">www.ti.com/wireless</a>
RF/IF and ZigBee® Solutions	<a href="http://www.ti.com/lprf">www.ti.com/lprf</a>		

Mailing Address: Texas Instruments, Post Office Box 655303, Dallas, Texas 75265  
Copyright © 2010, Texas Instruments Incorporated

## Preface

# Read This First

---

---

---

### ***About This Manual***

This document describes the process of installing and using SYS/BIOS 6.33 for use with Code Composer Studio v5.1 (CCSv5.1).

Previous versions of SYS/BIOS were called DSP/BIOS. The new name reflects that the kernel can also be use on processors other than DSPs.

### ***How to Use This Manual***

This document provides installation instructions in Chapter 1 and step-by-step instructions for starting to use SYS/BIOS in Chapter 2.

After you install SYS/BIOS, you might want to review the release notes in the installation before reading further.

After you have read this document, you should see the *SYS/BIOS 6.33 User's Guide* (SPRUEX3) and the online CDOC reference for more information.

### ***Notational Conventions***

This document uses the following conventions:

- Program listings, program examples, and interactive displays are shown in a special typeface. Examples use a bold version of the special typeface for emphasis.

Here is a sample program listing:

```
#include <xdc/runtime/System.h>

int main(){
    System_printf("Hello World!\n");
    return (0);
}
```

- Square brackets ( [ and ] ) identify an optional parameter. If you use an optional parameter, you specify the information within the brackets. Unless the square brackets are in a bold typeface, do not enter the brackets themselves.

### ***Related Documentation from Texas Instruments***

See Sections 1.9 and 1.10 in this document for a detailed list of other documentation resources.

## **Trademarks**

The Texas Instruments logo and Texas Instruments are registered trademarks of Texas Instruments. Trademarks of Texas Instruments include: TI, Code Composer, Code Composer Studio, DSP/BIOS, SYS/BIOS, SPOX, TMS320, TMS320C54x, TMS320C55x, TMS320C62x, TMS320C64x, TMS320C67x, TMS320C28x, TMS320C5000, TMS320C6000 and TMS320C2000.

Windows is a registered trademark of Microsoft Corporation.

Linux is a registered trademark of Linus Torvalds.

All other brand or product names are trademarks or registered trademarks of their respective companies or organizations.

# Contents

---

---

---

<b>Read This First .....</b>	<b>iii</b>
About This Manual .....	iii
How to Use This Manual.....	iii
Notational Conventions.....	iii
Related Documentation from Texas Instruments.....	iii
Trademarks .....	iv
<b>Contents.....</b>	<b>0-5</b>
<b>Using SYS/BIOS with CCSv5.1 .....</b>	<b>1-6</b>
1.1 Installing SYS/BIOS as Part of CCSv5.1.....	1-6
1.2 Creating Projects that Use SYS/BIOS 6.33 .....	1-7
1.3 Project Templates .....	1-9
1.4 Working with CCS Build Settings .....	1-10
1.5 Using XGCONF to Configure SYS/BIOS Modules and Objects .....	1-11
1.6 Building a SYS/BIOS Project.....	1-12
1.7 Running a SYS/BIOS Project .....	1-12
1.8 Using SYS/BIOS as a Standalone Product.....	1-13
1.9 More About SYS/BIOS.....	1-14
1.10 More About XDCtools .....	1-15

# Using SYS/BIOS with CCSv5.1

---



---



---

This chapter describes how to build SYS/BIOS examples and applications.

Topic	Page
1.1 Installing SYS/BIOS as Part of CCSv5.1 .....	6
1.2 Creating Projects that Use SYS/BIOS 6.33 .....	7
1.3 Project Templates.....	9
1.4 Working with CCS Build Settings .....	10
1.5 Using XGCONF to Configure SYS/BIOS Modules and Objects .....	11
1.6 Building a SYS/BIOS Project.....	12
1.7 Running a SYS/BIOS Project.....	12
1.8 Using SYS/BIOS as a Standalone Product .....	13
1.9 More About SYS/BIOS .....	14
1.10 More About XDCtools.....	15

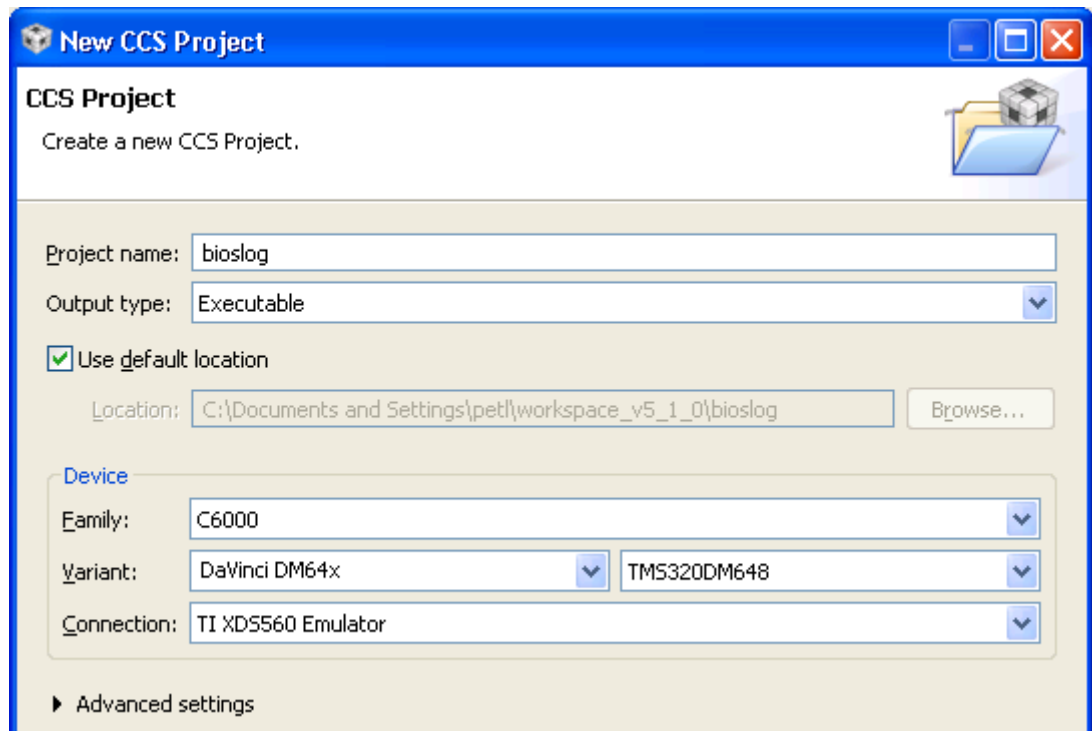
## 1.1 Installing SYS/BIOS as Part of CCSv5.1

If you are installing Code Composer Studio v5.1 (CCSv5.1), all the components you need in order to use SYS/BIOS 6.33 can be installed as part of the CCSv5.1 installation. When you perform the CCSv5.1 installation, make sure the checkboxes are selected for installing XDCtools and SYS/BIOS 6.33 for your specific platform or alternately select to install everything at the top level of the installer.

## 1.2 Creating Projects that Use SYS/BIOS 6.33

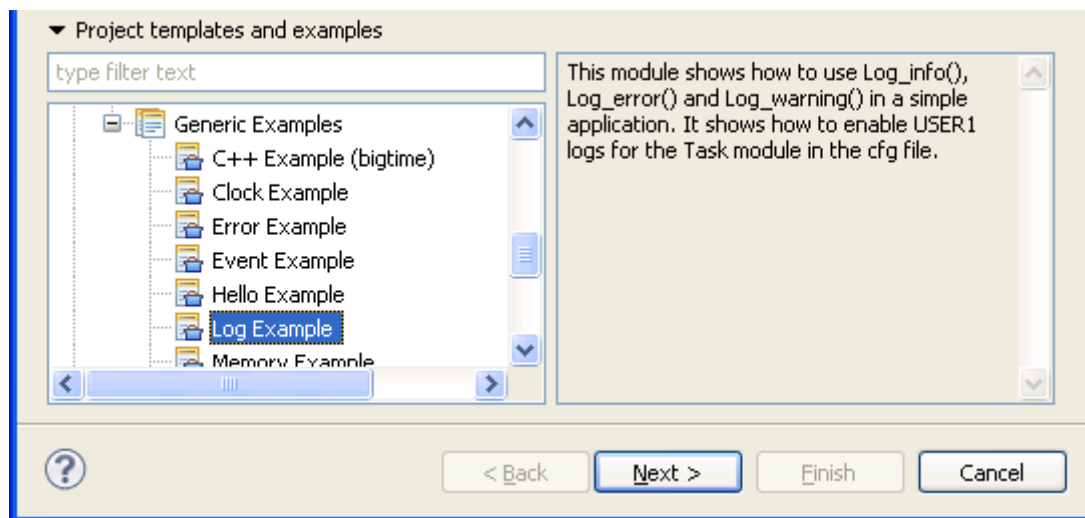
Follow these steps to use CCSv5.1 to create a CCS project that can use SYS/BIOS 6.33. If you are using a different version of CCS, the steps may vary somewhat.

- 1) Open CCSv5.1 and choose New Project from the "Welcome to Code Composer Studio v5" page or **File > New > CCS Project** from the menu bar.
- 2) In the New CCS Project dialog, type a **Project name**. For example, to begin creating a project using the "log" example provided with SYS/BIOS, you can type "bioslog". The default project location automatically reflects the project name.
- 3) Select your device family in the **Family** field. For example, you might select "C6000".
- 4) In the **Variant** row, select a filter in the first field. This shortens the list of device variants in the second field. Then, select the actual device you are using. For example, you might select "DaVinci DM64x" in the filter field and "TMS320DM647" in the second field.
- 5) You may also choose a **Connection** type to specify your emulator or simulator.

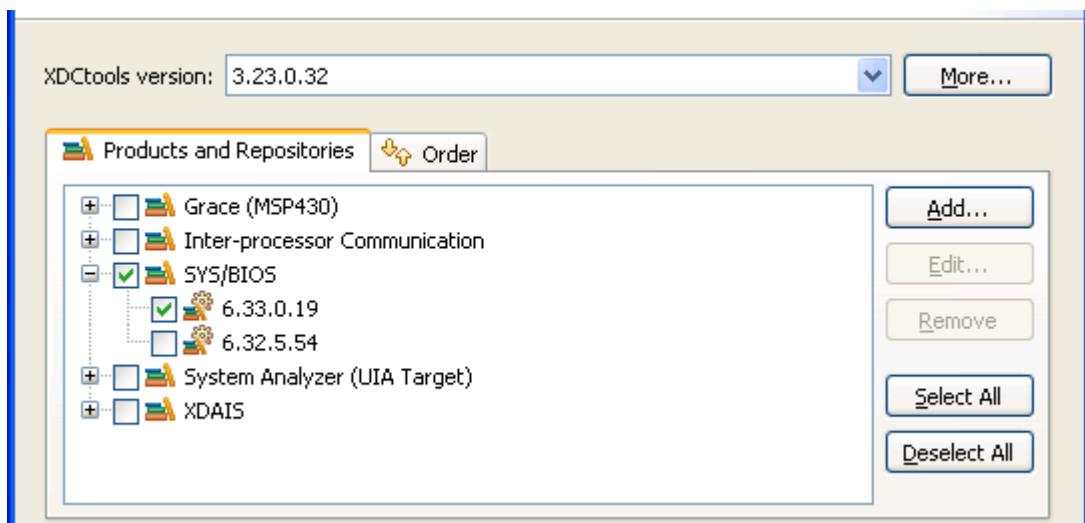


- 6) Depending on your device, you might also need to adjust the **Device Endianness** setting under **Advanced settings**.

- 7) In the “Project Templates and examples” area, expand the **SYS/BIOS > Generic Examples** list to see the available examples. When you highlight a template, a brief description is provided to the right. For a sample first project, select the **Sample: Log Example**.
- 8) Click **Next** (not **Finish**).



- 9) On the “RTSC Configuration Settings” page, make sure the versions of XDCtools, SYS/BIOS, and other products that you want to use are selected and compatible. Check the release notes “Dependencies” section or the [SYS/BIOS software downloads](#) site for recommended compatible versions. By default, the most recent versions installed are selected.





- 10) Also on the “RTSC Configuration Settings” page, click the drop-down arrow next to the **Platform** field. CCSv5.1 scans the available packages for available platforms. After the list has been created, click on the list and choose the platform you want to use. (The **Target** setting is based on device settings you made on earlier pages, and should not need to be changed.)
- 11) Choose which libraries you want the configuration build to link with in the **Build-Profile** field. The default “release” option is a good choice when you are first using SYS/BIOS with CCS. Then, click **Finish**.

The screenshot shows a configuration dialog box with the following fields and controls:

- Target:** A text input field containing the value "ti.targets.C64P".
- Platform:** A dropdown menu with "ti.platforms.evmDM648" selected.
- Build-profile:** A dropdown menu with "release" selected.
- Navigation:** Four buttons at the bottom: "< Back", "Next >", "Finish", and "Cancel".
- Help:** A question mark icon in a circle on the bottom left.

This adds a new project to the C/C++ Projects list in CCS. The project contains both the log.c source file and the log.cfg SYS/BIOS configuration file, which contains the static configuration of XDCtools and SYS/BIOS modules and objects.

For more details, see Section 2.1 of the *SYS/BIOS User's Guide*.

### 1.3 Project Templates

When you create a CCSv5.1 project, you select a Project Template. SYS/BIOS templates are in the **SYS/BIOS** category. The following SYS/BIOS templates are available when you choose **File > New > CCS Project** and get to the Project Templates page of the project creation wizard.

- C++ Example (bigtime)
- Clock Example
- Error Example
- Event Example
- Hello Example
- Log Example
- Memory Example
- Small Example
- Stairstep Example
- Static Example
- Swi Example
- Task Mutex Example
- Task Mutex Example (separate config project).

The template with a separate configuration project creates two projects--one to contain the C source and one to contain the SYS/BIOS configuration file. Separating the application into two projects allows you to share the configuration project with multiple C source code projects.

## 1.4 Working with CCS Build Settings

After you have created a project that contains a SYS/BIOS configuration file, you can change the properties of the project in CCSv5.1 by right-clicking the project name and choosing **Properties**. Choose the “CCS General” category and then the “RTSC” tab. You can change the settings you made on the “RTSC Configuration Settings” page of the project creation wizard. See Section 1.2.

In the “CCS General” category of the Properties dialog, the **General** tab applies to compiler settings, and the **RTSC** tab applies to the “configuro” utility provided by XDCtools to process the .cfg file.

If your C source code and your SYS/BIOS configuration file are stored in separate projects, note that your build settings for both projects must match or be compatible. If you change the build settings for a configuration project, you should also change the build settings for application projects that use that configuration.

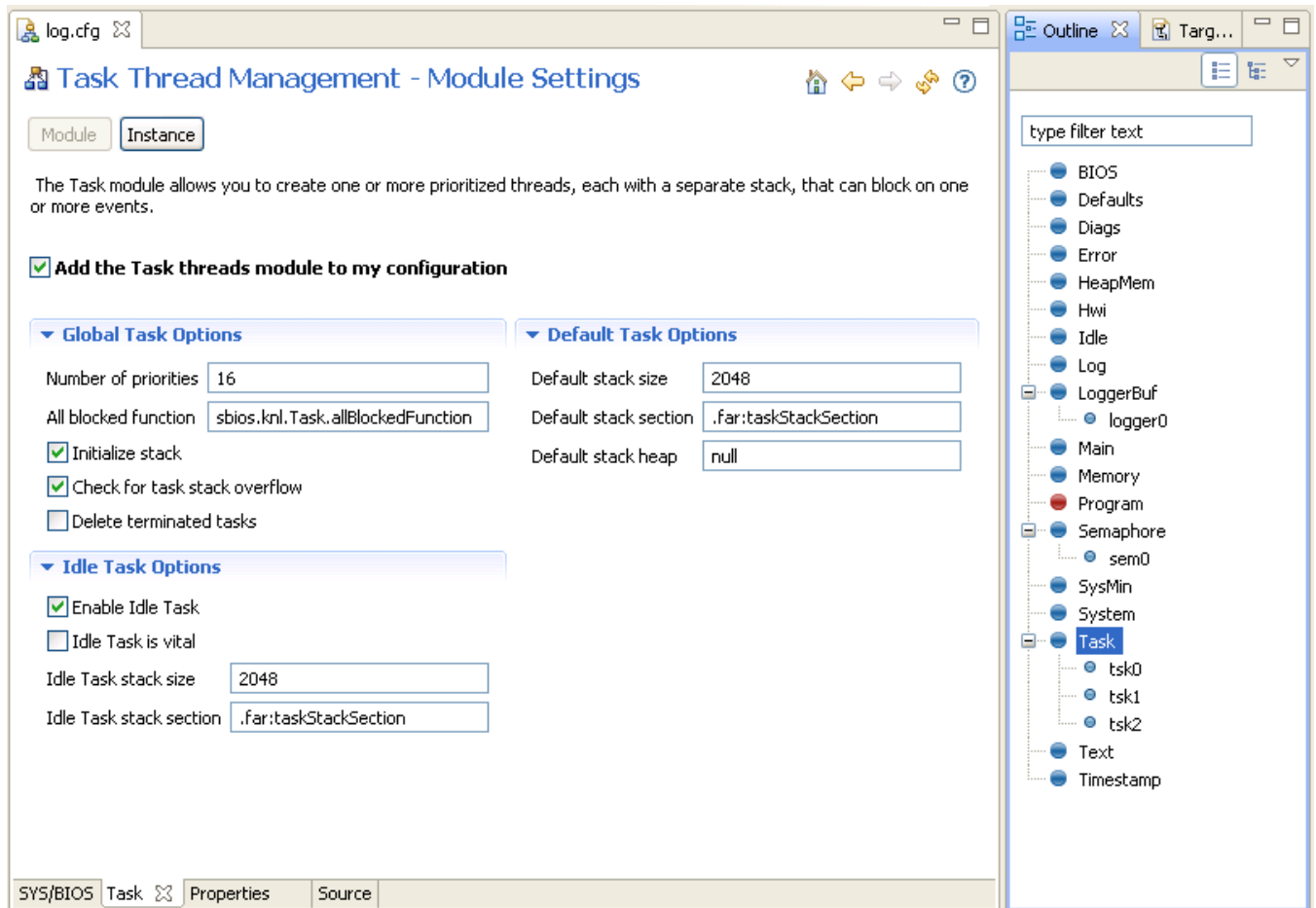
Note that if there is any platform-specific configuration in your .cfg file, you must change those settings in addition to any changes you make to the CCS Build Settings.

For more details, see Section 2.3 of the *SYS/BIOS User's Guide*.

## 1.5 Using XGCONF to Configure SYS/BIOS Modules and Objects

XGCONF is a tool that allows you to graphically create and view SYS/BIOS configuration scripts. (If you have used DSP/BIOS 5.x, it is somewhat similar to the DSP/BIOS Configuration Tool.)

To start XGCONF, right-click on a \*.cfg file in the "C/C++ Projects" view and select **Open with > XGCONF**.



For more details, see Section 2.2 of the *SYS/BIOS User's Guide*.

## 1.6 Building a SYS/BIOS Project

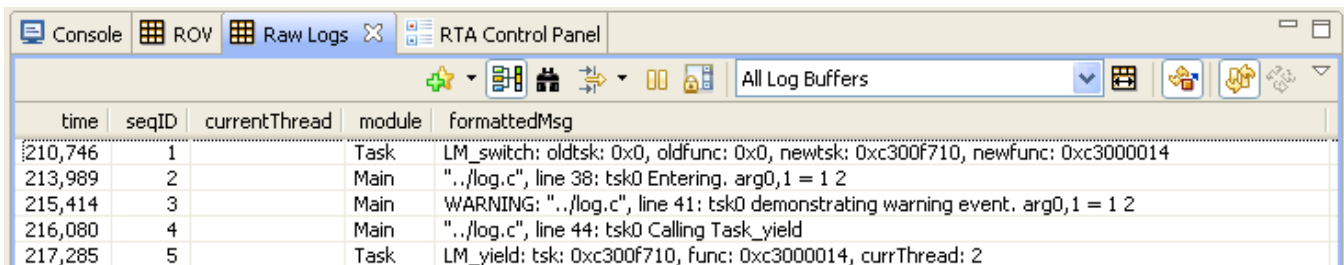
To build your project, click on the project “bioslog [Active – Debug]” so it is highlighted and then choose **Project > Build Active Project** from the CCSv5.1 menus.

You will see messages about the build’s progress in a Console window. The “Invoking: XDCtools” section of the messages provides information about processing of the SYS/BIOS configuration file. For SYS/BIOS projects, this is performed before the compiler and linker are run.

For more details, see Section 2.3 of the *SYS/BIOS User’s Guide*.

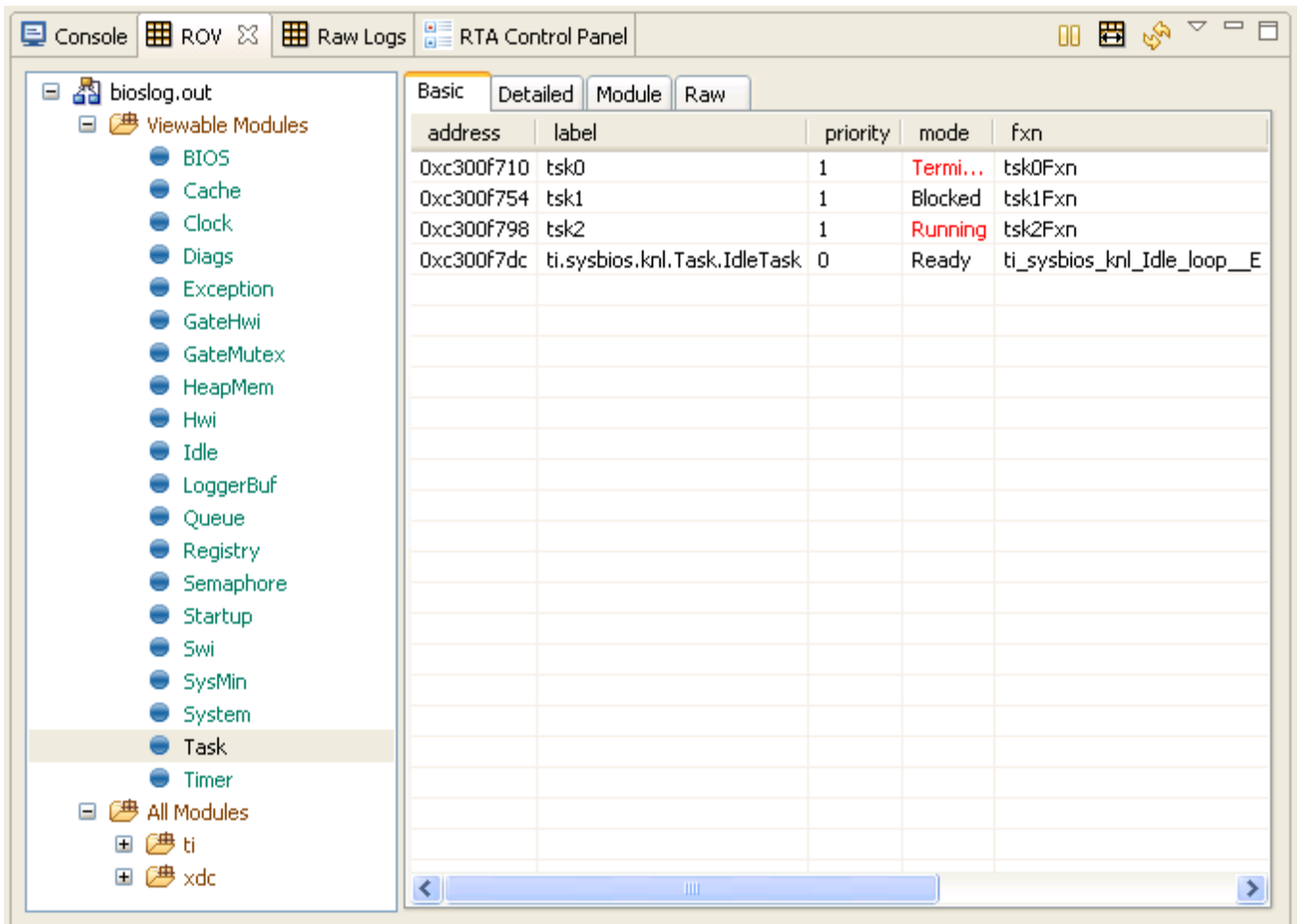
## 1.7 Running a SYS/BIOS Project

- 1) To run your project, choose **Run > Debug** from the CCSv5.1 menus. If this is the first time you are debugging a project for your target, you may need to set up a CCS Target Configuration. See the CCSv5.1 help or Section 2.3.4 of the *SYS/BIOS User’s Guide* for details.
- 2) In the Debug perspective, open the Runtime Object Viewer (ROV) tool by choosing **Tools > ROV**. Also open the Raw Logs view by choosing **Tools > RTA > Raw Logs**. These tools allow you to see the activity of XDCtools and SYS/BIOS modules.
- 3) Set some breakpoints in the log.c source file. (You can do this by right-clicking on a line and choosing **New Breakpoint > Breakpoint**.) For example, set a breakpoint on the last line of each function in log.c.
- 4) Run the application.
- 5) In the Raw Logs window, you can see the informational, warning, and error messages sent by the calls to Log module APIs in log.c. The messages that begin with “LM” are diagnostics provided by XDCtools. Messages that begin with “WARNING” come from calls to Log\_warning2. Messages that begin with “ERROR” come from calls to Log\_error2. Messages that begin with “./log.c” come from calls to Log\_info0 and Log\_info2 (depending on the number of arguments).



time	seqID	currentThread	module	formattedMsg
210,746	1		Task	LM_switch: oldtsk: 0x0, oldfunc: 0x0, newtsk: 0xc300f710, newfunc: 0xc3000014
213,989	2		Main	"./log.c", line 38: tsk0 Entering. arg0,1 = 1 2
215,414	3		Main	WARNING: "./log.c", line 41: tsk0 demonstrating warning event. arg0,1 = 1 2
216,080	4		Main	"./log.c", line 44: tsk0 Calling Task_yield
217,285	5		Task	LM_yield: tsk: 0xc300f710, func: 0xc3000014, currThread: 2

- 6) In the ROV window, expand the tree to see the ti.sysbios.knl.Task module. The right pane shows a list of the Task threads in the application. As you advance from breakpoint to breakpoint, you see the run mode of the threads change.



For more details, see Chapter 8 of the *SYS/BIOS User's Guide*.

## 1.8 Using SYS/BIOS as a Standalone Product

You can also install SYS/BIOS for use outside of CCS.

In order to use SYS/BIOS, you must also install XDCtools. See the *XDCtools Getting Started Guide* for installation instructions. XDCtools provides tools to build projects that contain the configuration files used by SYS/BIOS.

To install SYS/BIOS as standalone software, follow these steps:

- 1) Place the distribution file into a temporary location.
- 2) Double-click on the distribution file to start the installation process. The installation directory, `<bios_install_dir>`, can be anywhere on your system, but make sure there are no spaces in the full path to `<bios_install_dir>`.

- 3) View documentation for the SYS/BIOS 6.33 packages at `<bios_install_dir>/docs`.

You can build SYS/BIOS applications, including processing the SYS/BIOS configuration file, on the command line on Windows or Linux using makefiles. When you use a makefile to build, you can compile and link with the TI Code Generation Tools, the GCC compiler for your target, or other command-line compilers.

For more details, see Section 2.3.3 of the *SYS/BIOS User's Guide*. For sample files to download, see the [SYS/BIOS with GCC](#) topic on the TI Embedded Processors Wiki.

## 1.9 More About SYS/BIOS

To learn more about using SYS/BIOS, see the following:

- *SYS/BIOS Release Notes*. In the top-level SYS/BIOS installation directory, or choose **Help > Help Contents** in CCSv5.1 and expand the **SYS/BIOS** item.
- *SYS/BIOS User's Guide* (SPRUEX3). In `<bios_install_dir>/docs`, or choose **Help > Help Contents** in CCSv5.1 and expand the **SYS/BIOS** item. Also available on the [Texas Instruments website](#).
- *Migrating a DSP/BIOS 5 Application to SYS/BIOS 6* (SPRAAS7). In `<bios_install_dir>/docs/Bios_Legacy_App_Note.pdf`, or choose **Help > Help Contents** in CCSv5.1 and expand the **SYS/BIOS** item. Also available on the [Texas Instruments website](#).
- *SYS/BIOS API Reference* (also called "CDOC"). Run `<bios_install_dir>/docs/cdoc/index.html`, or choose **Help > Help Contents** in CCSv5.1 and expand the **SYS/BIOS** item.
- [SYS/BIOS main page](#) on the TI Embedded Processors Wiki. This page provides links to many resources for using SYS/BIOS.
- [BIOS forum](#) on TI's E2E Community.
- [SYS/BIOS 6.x Product Folder](#) on ti.com
- [Embedded Software Download Page](#)

To learn more about using Code Composer Studio (CCS) v5.1, see the following:

- *CCS online help*. Choose **Help > Help Contents** in CCSv5.1.
- [CCSv5 main page](#) on the TI Embedded Processors Wiki
- [Code Composer forum](#) on TI's E2E Community

## 1.10 More About XDCtools

XDCtools is a set of tools that enable the creation and use of software packages. It allows products to be developed as reusable packages. (RTSC is the underlying standard that is implemented by XDCtools.)

XDCtools defines the configuration language used by SYS/BIOS (and other products that use XDCtools). For SYS/BIOS 6.x versions, the SYS/BIOS configuration scripts are stored in .cfg and other files.

To learn more about using XDCtools, see the following:

- *XDCtools API Reference* (also called "CDOC"). Run `<xdctools_install_dir>/docs/xdctools.chm`, or choose **Help > Help Contents** in CCSv5.1 and expand the **XDCtools** item.
- [RTSC-Pedia Wiki](#)
- [BIOS forum](#) on TI's E2E Community
- [Embedded Software Download Page](#)