

# MMWAVE DFP User Guide



**Product Release 0.9.1**

**Release Date: Sept 19, 2017**

**Document Version: 0.6**

---

## Contents

Abbreviations .....	3
1. System Overview .....	4
1.1 mmWave Firmware .....	4
1.2 mmWaveLink .....	4
1.3 mmWave RF Evaluation.....	5
2. AWR1243 - System Deployment .....	6
3. Getting started .....	7
4. PC Connection.....	7
4.1 Connection with AWR1243 BOOST.....	7
4.2 Connection with MMWAVE-DEVPACK .....	8
5. Demonstration Mode .....	11
6. Visual Studio Development Mode.....	13
7. Introduction to DFP examples.....	14
7.1 mmwavelink_example .....	14
7.2 mmwavelink_monitoring.....	14
8. API Sequence .....	15
9. Additional dependency .....	16

---

## Abbreviations

Abbreviation	Description
AE	Asynchronous Event
DFP	Device Firmware Package
RadarSS	Radar Sub system
MasterSS	Master Sub system
SPI	Serial Peripheral Interface

## 1. System Overview

The mmWave device firmware package (DFP) is split in three broad components: mmWave Firmware, mmWaveLink and mmWave RF evaluation.

### 1.1 mmWave Firmware

mmWave Firmware is responsible for configuring RF/analog, digital front end in TI mmWave radar devices and consists of below components:

- Master SS firmware (Only AWR1243)
- Radar SS firmware (For all variants)

All the services of Master SS and Radar SS firmware are available to external processor using the APIs in mmWaveLink framework.

mmWave Firmware binaries are available at '*mmwave\_dfp\_<ver>firmware*'

### 1.2 mmWaveLink

#### 1.2.1 mmWaveLink framework

mmWaveLink framework acts as driver for Master sub-system and Radar sub-system. It exposes a suite of low level APIs which allow application to enable, configure and control Master SS and Radar SS. It provides a well-defined platform and OS abstraction for the application to plug in the communication driver and OS routine callbacks to communicate with the TI mmWave devices. External Processor can use this framework to connect and configure AWR1243 device over SPI.

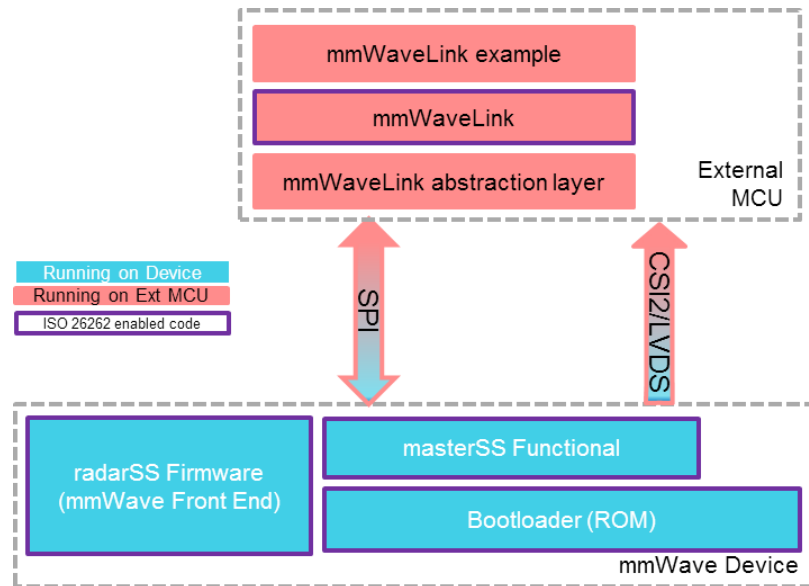
mmWaveLink source and library are available at '*mmwave\_dfp\_<ver>ti\control\mmwavelink*'

#### 1.2.2 mmWaveLink examples

A visual studio based sample applications are included in DFP which emulates a host processor on windows PC and runs the mmWaveLink framework. SPI is emulated over USB using the FT4232H device. The platform library which implements the required SPI and OS callbacks is included in the mmWave DFP. Refer to section 7.2 for more details.

These examples are available under '*mmwave\_dfp\_<ver>ti\example*' path named as mmwavelink\_example and mmwavelink\_monitoring.

Figure-1 depicts high level modules of external processor and AWR1243 device.



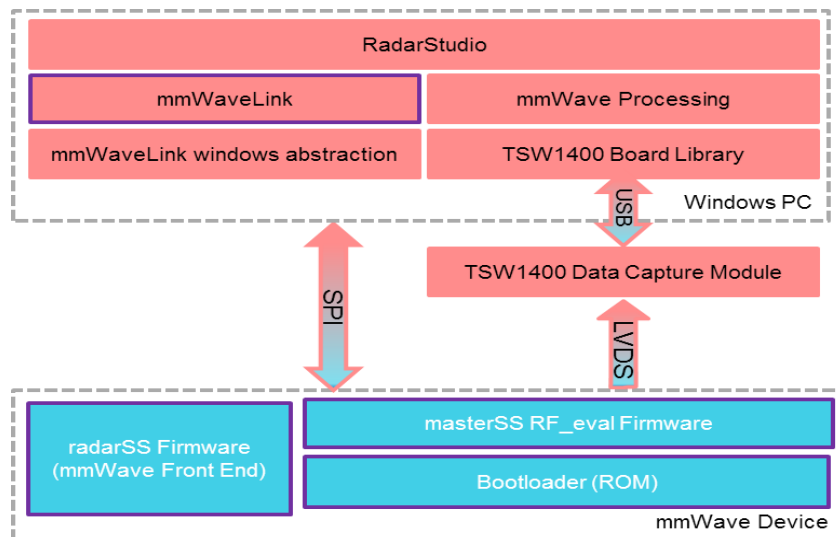
**Figure 1. External Processor and AWR1243**

### 1.3 mmWave RF Evaluation

For mmWave RF/System evaluation purpose, DFP includes Radar Studio Tool which is designed to communicate with all variants of TI mmWave devices for RF and system performance evaluation.

This tool is available at '*mmwave\_dfp<ver>vf\_eval/radarstudio*' directory. Refer to Radar Studio user guide for more details.

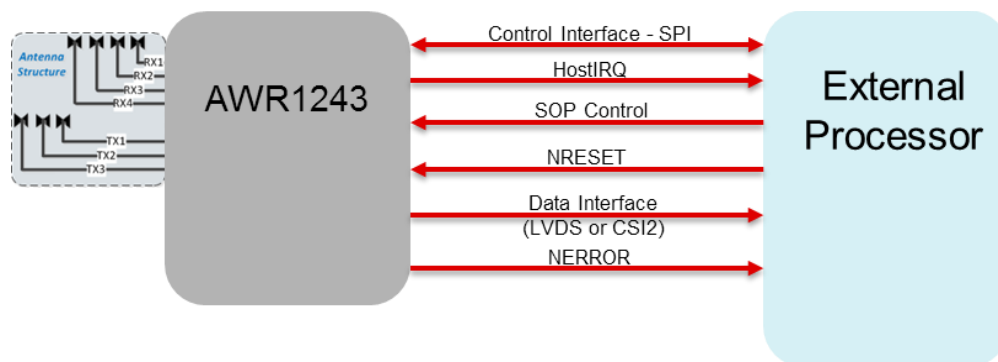
Figure-2 depicts the modules of Radar Studio and connection with AWR1243 and TSW1400 EVM Board



**Figure 2. Radar Studio and AWR1243**

## 2. AWR1243 - System Deployment

User needs to connect an External Processor with AWR1243 device to configure mmWave front end (Radar SS) and process raw data captured over high speed interface. Figure-3 depicts the connection between external processor and AWR1243 device.



**Figure 3. Connection between External Processor and AWR1243**

Details of AWR1243 pins which needs to be connected to the external processor:

### a. Control Interface- SPI

- SPI\_CLK\_1: Serial Clock by SPI master (external processor).
- SPI\_CS\_1: SPI chip select (active low), output from SPI master.
- MOSI\_1: Master Output Slave Input (data output from master).
- MISO\_1: Master Input Slave Output (data output from slave).

Note: External Processor should configure SPI with below configurations

- SPI mode 0 (Phase 0, Polarity 0)
- SPI word size = 16bit
- CS is toggled for each SPI word
- Minimum 2 SPI clock delay between CS active to rising edge of the first SPI clock
- SPI Clock is recommended to be less than 8MHz. Higher values are not verified on EVM.

**b. Host IRQ:** SPI\_HOST1\_INTR (SPI Host interrupt) line, output from AWR1243 to notify Host. It connects to one of the interrupt capable GPIO pin in external processor

**c. SOP Control:** TDO, SYNC\_OUT, PMIC\_CLKOUT. Output from external processor to set operating mode of AWR1243 device. For functional mode, It should be set as TDO = 1, SYNC\_OUT = 0, PMIC\_CLKOUT = 0

**d. NRESET:** Output from external processor to reset AWR1243 device. To power up AWR1243, NRESET = 1. To power Off, NRESET = 0

**e. Data Interface:** These lines are used for High speed interface to send raw data over CSI2/LVDS from AWR1243 to external processor.

CSI2_TXP[0]	Differential data Out – Lane 0
CSI2_TXM[0]	
CSI2_CLKP	Differential clock Out
CSI2_CLKM	
CSI2_TXP[1]	Differential data Out – Lane 1
CSI2_TXM[1]	
CSI2_TXP[2]	Differential data Out – Lane 2
CSI2_TXM[2]	
CSI2_TXP[3]	Differential data Out – Lane 3
CSI2_TXM[3]	

- f. **NERROR:** NERROR\_OUT line is used by AWR1243 to notify external processor when fatal error occurs in device.

### 3. Getting started

The best way to get started with the mmWave DFP is to start running mmWaveLink examples that are provided as part of the package. `mmwavelink_example` and `mmwavelink_monitoring` are the two applications available at '`mmwave_dfp_<ver>\ti\example`' directory.

These applications demonstrate firmware download on AWR1243 and configuration of mmWave front end using mmWaveLink framework over SPI interface. It allows user to use difference chirp parameters and configure mmWave device using application executable.

Note1: To receive the CSI2/LVDS, Connect the CSI-2/LVDS Interface of MMWAVE\_DEVPACK to an external device which has a compatible CSI-2/LVDS. The detail of the external device is out-of-scope for this document.

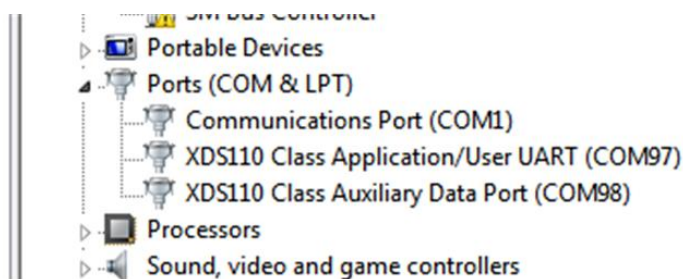
Note2: Following sections describe the general procedure for connecting the EVM and running the example. Refer to Radar Studio user guide in '`mmwave_dfp_<ver>rf_eval/docs`' for steps required to run Radar Studio GUI

## 4. PC Connection

### 4.1 Connection with AWR1243 BOOST

When the EVM is powered on and connected to Windows PC via the supplied USB cable, there should be two additional COM Ports in Device Manager as shown in Figure-4. See EVM User Guide for details on the COM port.

If below COM ports doesn't show up in the Device Manager install the emupack available [here](#).



**Figure 4. AWR1243-BOOST COM Ports**

The USB connection provides below functionalities.

- JTAG for CCS connectivity – Only required for debug purpose. More detail on this is not in the scope of this document.
- UART for downloading firmware in serial data flash using Radar Studio GUI or UniFlash. Refer to respective user guides for more details.
- UART for downloading Firmware using Radar Studio GUI. Refer to Radar Studio user guide for more details.

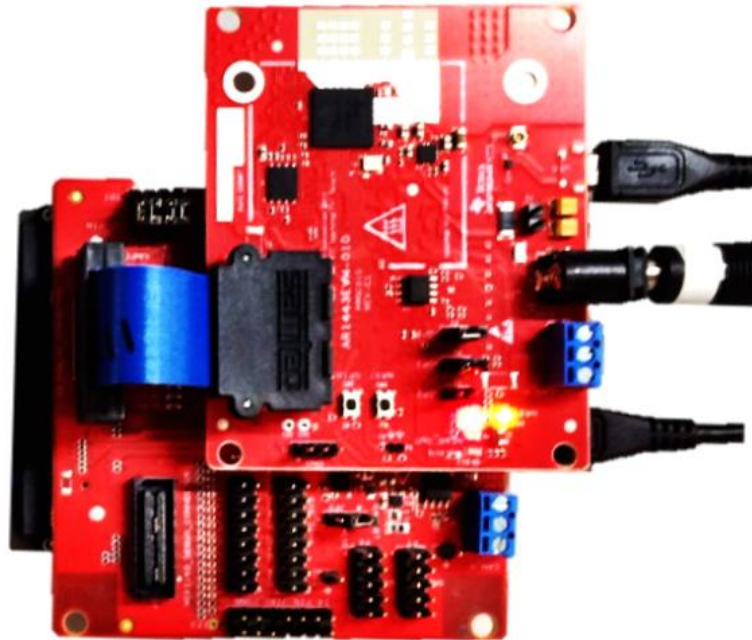
Note: This step can be skipped if user wants to run mmWaveLink\_example only. It is primarily intended for Radar Studio GUI and debug purpose.

## 4.2 Connection with MMWAVE-DEVPACK

For running mmWaveLink\_example and Radar Studio GUI tool, User also needs to connect the MMWAVE-DEVPACK along with the EVM. Stack the DevPack with the EVM as shown in Figure-5

For more details on DEVPACK connection, see the [mmWave-DevPack User Guide](#).

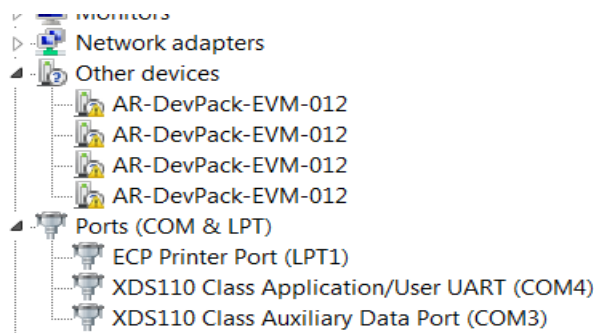




**Figure 5. AWR1243 BOOST – MMWAVE DEVPACK Connection**

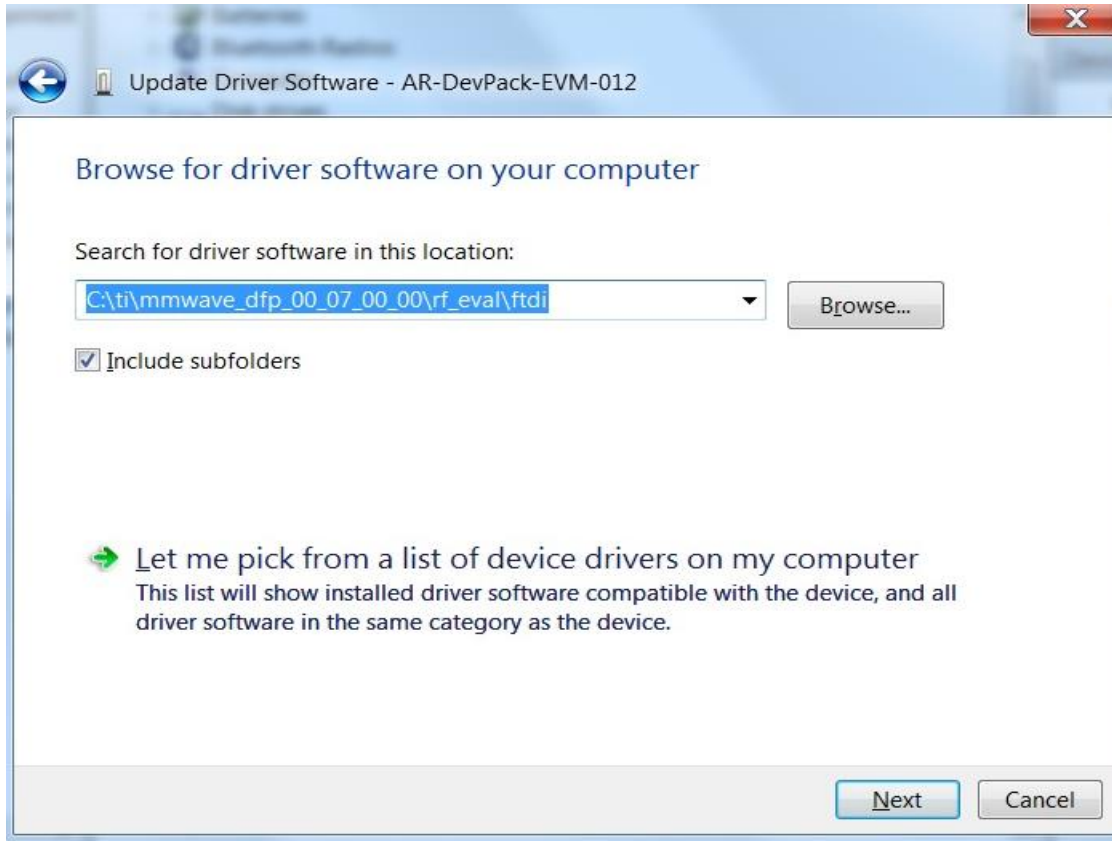
Once stacking is done, connect DevPack to PC using the USB cable provided and connect the power cable. Once done, there should be 4 additional COM Ports as shown in Figure-9

When the DevPack is connected for the first time to the PC, Windows maybe not be able to recognize the device and would come up as 'Other devices' in device manager as shown in Figure-6.



**Figure 6. Device Manager (Other Devices)**

In Windows device manager, right-click on these devices and update the drivers by pointing to the location of the FTDI driver as show in Figure-7



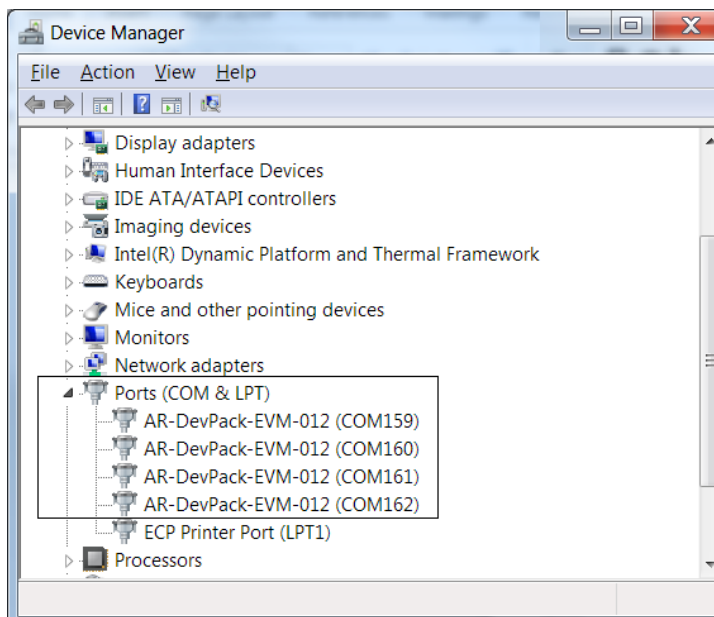
**Figure 7. FTDI driver update**

This must be done for all four COM ports. If after updating the FTDI driver, device manager still doesn't show 4 new COM Ports, as shown in Figure-8, you would need to update the FTDI driver once again.



**Figure 8. Device Manager (USB Serial Port)**

When all four COM ports are installed, the device manager recognizes these devices and indicates the COM port numbers, as shown in Figure-9.



**Figure 9. MMWAVE-DEVPACK COM Ports**

Note: To run mmWaveLink example user must connect AWR1243 EVM and DevPack as shown in Figure 5

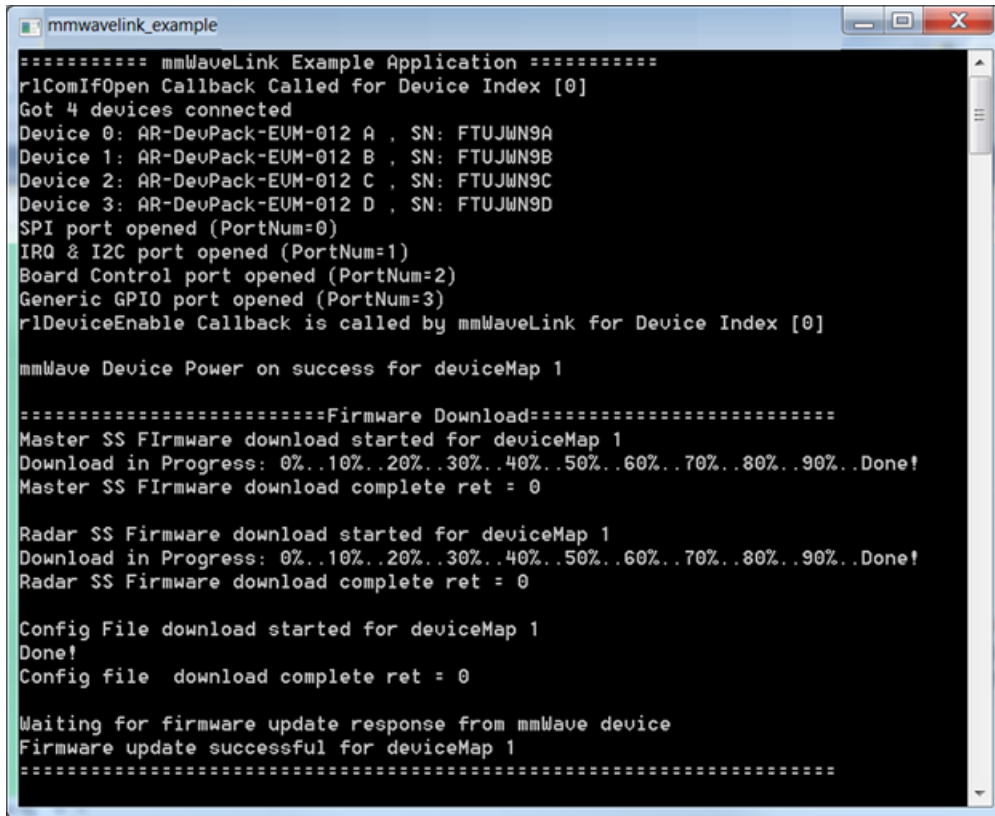
## 5. Demonstration Mode

This mode should be used with prebuild executable provided in DFP.

1. Connect AWR1243 EVM and DEVPACK setup to Windows PC as mentioned in section 4.2
2. Open windows command prompt and goto '`mmwave_dfp_<ver>\ti\example\`' path.
3. To run `mmwavelink_example` application goto to '`mmwavelink_example`' directory and run `mmwavelink_example.exe`
4. To run `mmwavelink_monitoring` application goto to '`mmwavelink_monitoring`' directory and run `mmwavelink_monitoring.exe`

Once executed the application reads mmWave radar configuration from `mmwaveconfig.txt` file and sends it to AWR1243 device over SPI. If you prefer to change the configuration, open `mmwaveconfig.txt` in text editor and update the parameters. For more details on these parameters, refer to doxygen HTML files in '`mmwave_dfp_<ver>\ti\mmwavelink\docs`' directory.

Figure 10 and figure 11 show output screen of this `mmwavelink_example` (default setting).



```

mmwavelink_example
===== mmWaveLink Example Application =====
r1ComIfOpen Callback Called for Device Index [0]
Got 4 devices connected
Device 0: AR-DevPack-EUM-012 A , SN: FTUJWN9A
Device 1: AR-DevPack-EUM-012 B , SN: FTUJWN9B
Device 2: AR-DevPack-EUM-012 C , SN: FTUJWN9C
Device 3: AR-DevPack-EUM-012 D , SN: FTUJWN9D
SPI port opened (PortNum=0)
IRQ & I2C port opened (PortNum=1)
Board Control port opened (PortNum=2)
Generic GPIO port opened (PortNum=3)
r1DeviceEnable Callback is called by mmWaveLink for Device Index [0]

mmWave Device Power on success for deviceMap 1

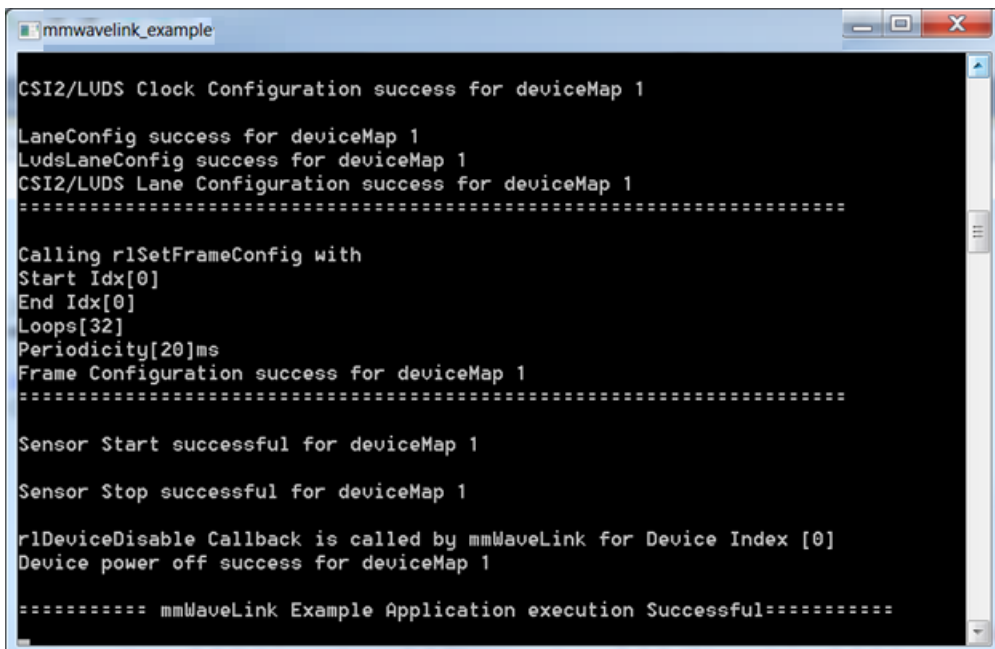
=====Firmware Download=====
Master SS Firmware download started for deviceMap 1
Download in Progress: 0%..10%..20%..30%..40%..50%..60%..70%..80%..90%..Done!
Master SS Firmware download complete ret = 0

Radar SS Firmware download started for deviceMap 1
Download in Progress: 0%..10%..20%..30%..40%..50%..60%..70%..80%..90%..Done!
Radar SS Firmware download complete ret = 0

Config File download started for deviceMap 1
Done!
Config file download complete ret = 0

Waiting for firmware update response from mmWave device
Firmware update successful for deviceMap 1
=====

```

**Figure 10. Output Window 1**


```

mmwavelink_example

CSI2/LUDS Clock Configuration success for deviceMap 1

LaneConfig success for deviceMap 1
LudsLaneConfig success for deviceMap 1
CSI2/LUDS Lane Configuration success for deviceMap 1
=====

Calling r1SetFrameConfig with
Start Idx[0]
End Idx[0]
Loops[32]
Periodicity[20]ms
Frame Configuration success for deviceMap 1
=====

Sensor Start successful for deviceMap 1

Sensor Stop successful for deviceMap 1

r1DeviceDisable Callback is called by mmWaveLink for Device Index [0]
Device power off success for deviceMap 1

===== mmWaveLink Example Application execution Successful=====

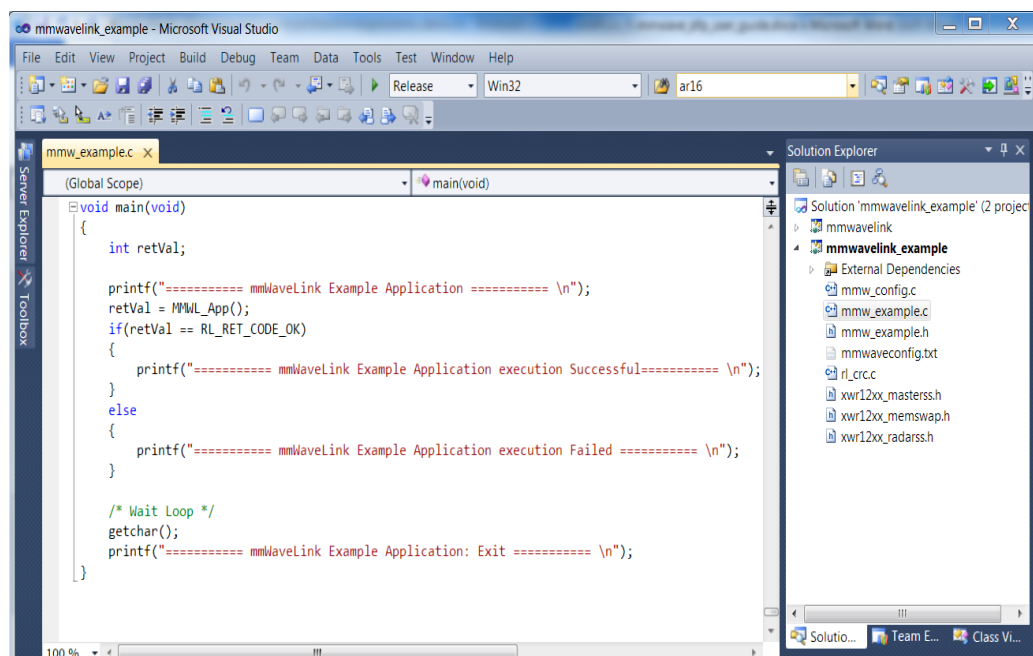
```

**Figure 11. Output Window 2**

## 6. Visual Studio Development Mode

This mode should be used when debugging with Visual Studio is involved and/or developing mmWaveLink application.

1. Install Microsoft Visual Studio 2010 or newer version on windows computer.
2. Connect AWR1243 EVM and DEVPACK setup to Windows PC as mentioned in section 4.2
3. Open Visual Studio IDE and then go for menu option 'File->Open->Project\Solution'.
4. Select 'mmwavelink\_example.sln' file from **mmwave\_dfp\_<ver>\ti\example\mmwavelink\_example'** directory.
5. It will open mmwavelink\_example solution containing two projects mmwavelink and mmwavelink\_example as given in below picture.



**Figure 12. Visual Studio Development mode**

6. Click menu option 'Build->Build Solution' which will build both projects.
7. To run the application in debugging mode press 'F5' key.
8. To debug, put breakpoints in the application source code as required.

Note - Please follow the same steps as mentioned above to open and run mmwavelink\_monitoring Visual Studio project.

## 7. Introduction to DFP examples

DFP package contains two different examples to demonstrate miscellaneous mmWave sensor features.

### 7.1 mmwavelink\_example

Along with basic mmwave features, this application showcases some of advanced features such as advanced frame configuration, continuous mode, dynamic chirp and dynamic profile configuration. User can enable or disable these advanced features using global TAGs.

```
----- Mmw_example.c -----  
/* Enable Advanced frame config test in the application  
TRUE -> config AdvFrame, FALSE -> config Legacy Frame */  
unsigned char gLinkAdvanceFrameTest = FALSE;  
  
/* Enable/Disable continuous mode config test in the application */  
unsigned char gLinkContModeTest = FALSE;  
  
/* Enable/Disable Dynamic Chirp config & Dynamic Chirp Enable test in application */  
unsigned char gLinkDynChirpTest = TRUE;  
  
/* Enable/Disable Dynamic Profile config test in application */  
unsigned char gLinkDynProfileTest = TRUE;
```

After setting required TAGs to TRUE/FALSE, build the application using visual studio project provided in DFP and run mmwavelink\_example.exe.

### 7.2 mmwavelink\_monitoring

This application demonstrates different types of monitoring feature of mmwave sensor device. User can enable or disable legacy/advanced frame configuration based on global TAG.

```
----- mmw_monitoring.c -----  
/* Enable Advanced frame config test in the application  
TRUE -> config AdvFrame, FALSE -> config Legacy Frame */  
unsigned char gLinkAdvanceFrameTest = FALSE;
```

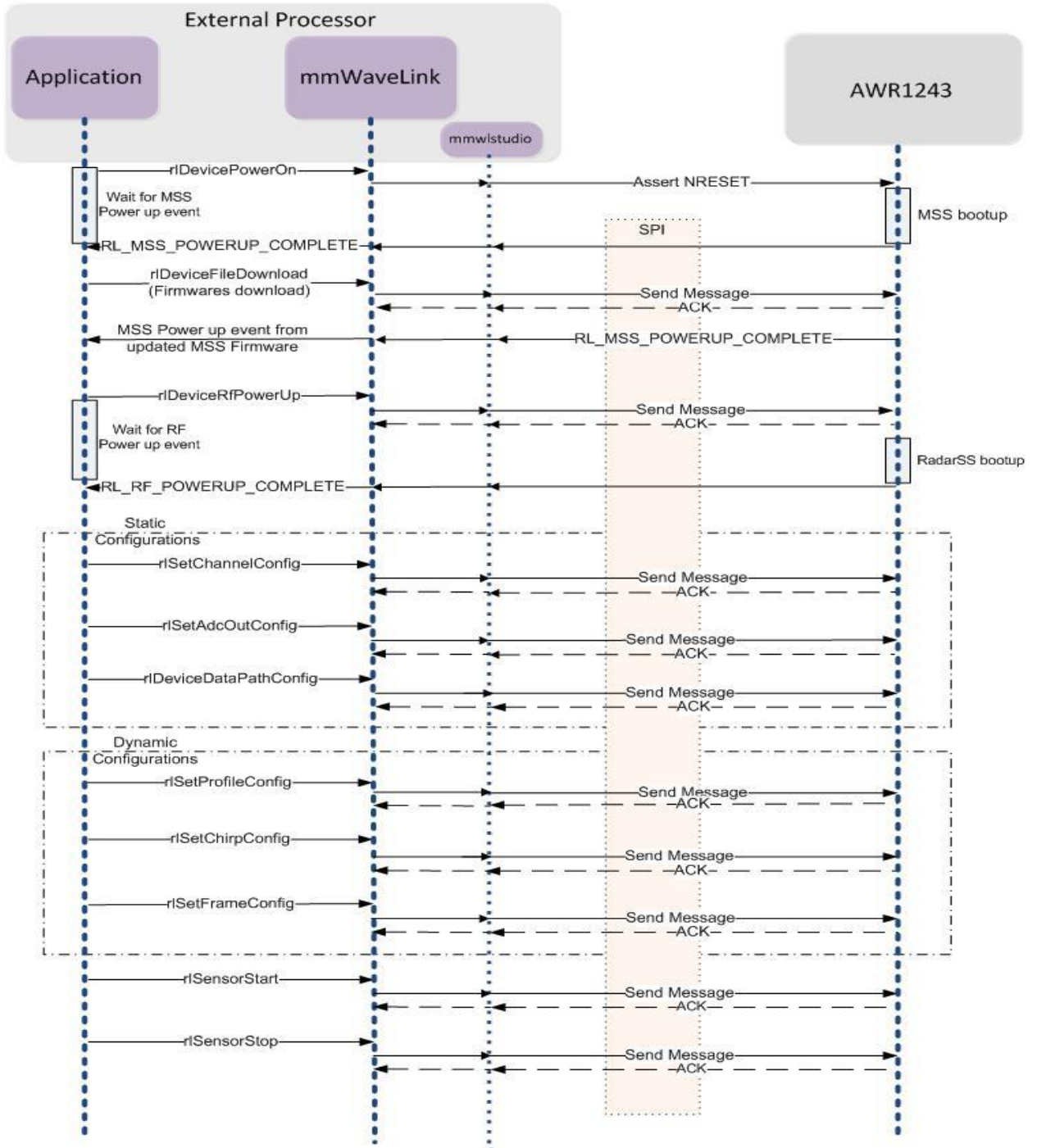
All monitoring reports are received as asynchronous event from the device and handled under MMWL\_asyncEventHandler function.

**NOTE** – Solely purpose of these examples provided in DFP package is to showcase the usage of different mmWaveLink APIs which will further help user to port it on any external processor.



## 8. API Sequence

Below Figure shows the API sequence in mmwavelink\_example (default setting). For more details on these APIs, refer to mmWaveLink framework doxygen HTML files in '*mmwave\_dfp\_<ver>ti\mmwavelink\docs*' directory.



**Figure 13. API Sequence**

## 9. Additional dependency

This mmWaveLink example application on windows PC uses below library to communicate with AWR1243.

**mmwlstudio.lib**: This library provides implementation of all the platform dependent routines required by TI mmWaveLink framework. Broadly it implements below platform interfaces as mentioned in mmWaveLink porting guide.

- Communication Interface
- Device Control Interface
- OS Interface

This library is available at '*mmwave\_dfp\_<ver>\ti\example\platform\mmwlstudio*' directory.

To port mmWaveLink framework to a new processor, developer need to provide similar interfaces as implemented on a windows platform using mmwkstudio library.

For more information on porting steps, refer to mmWaveLink framework doxygen HTML files in '*mmwave\_dfp\_<ver>\ti\mmwavelink\docs*' directory