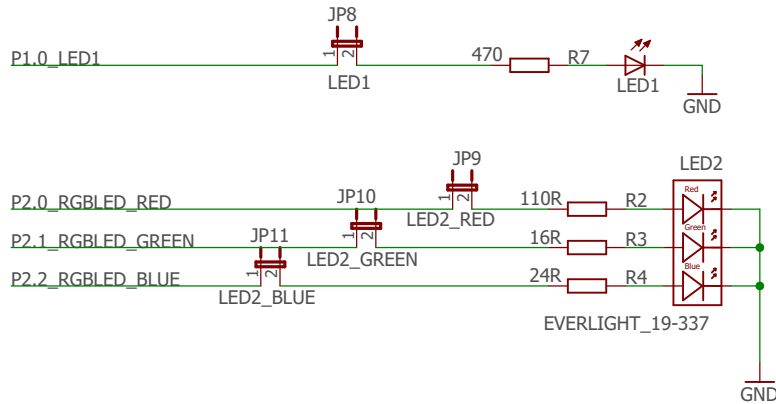
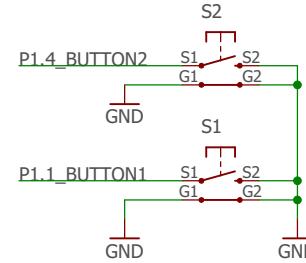


Buttons and LEDs

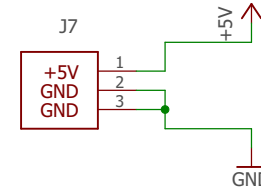
User LEDs



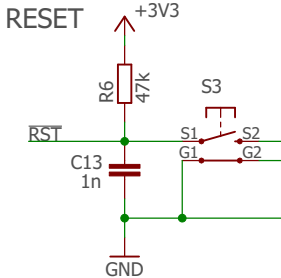
User Buttons



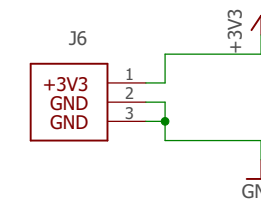
5V Header



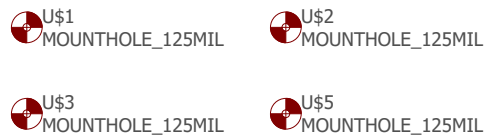
RESET



3V3 Header



Mounting Holes: 125 mil for 4-40/M2.5/M3 screws



Silkscreen



COMPANY: Texas Instruments

TITLE: MSP-EXP432P401R_EagleCAD

DRAWN: Mike Stein

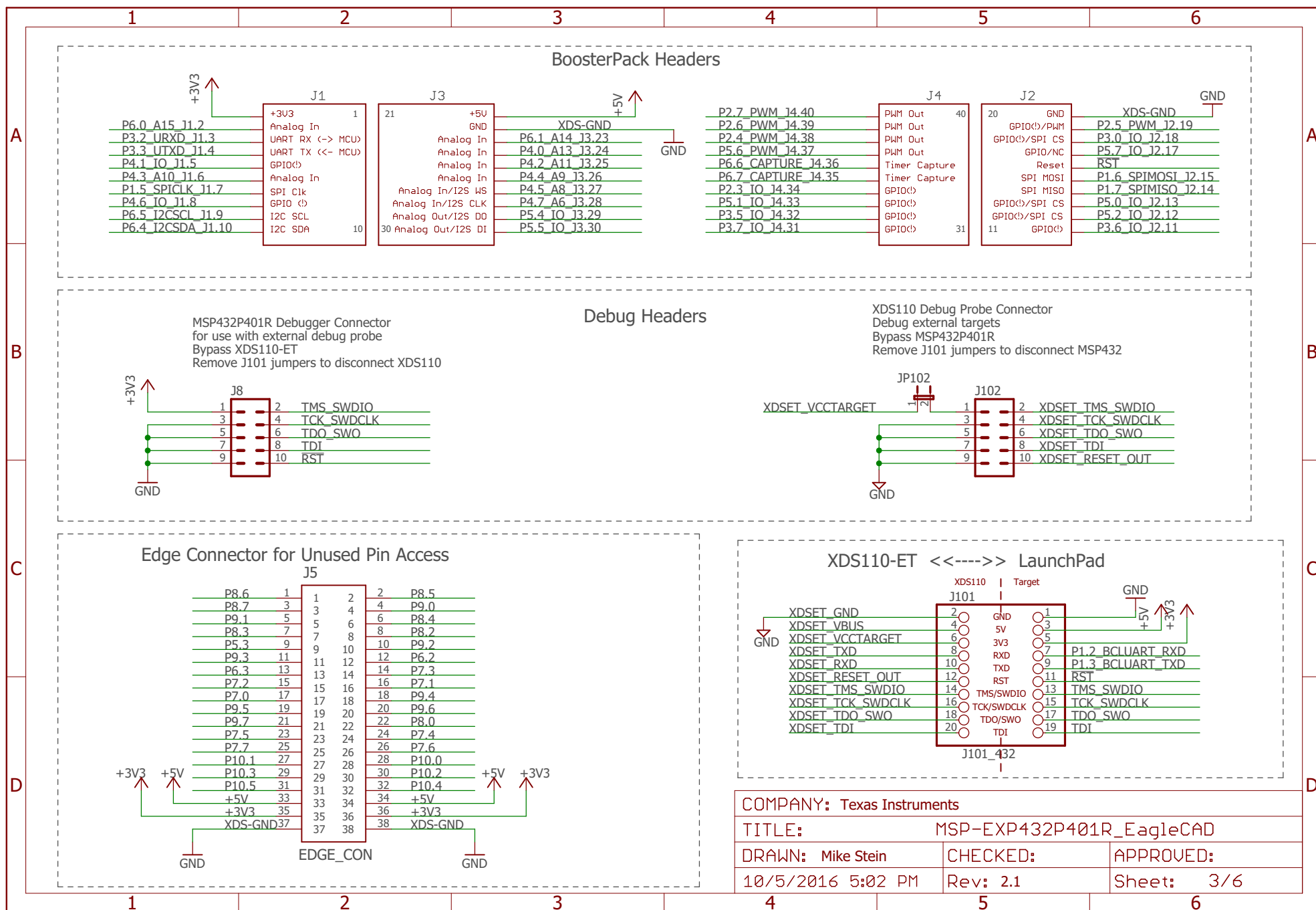
CHECKED:

APPROVED:

10/5/2016 5:02 PM

Rev: 2.1

Sheet: 2/6



D

Edge Connector for Unused Pin Access

J5

P8.6	1	2	P8.5
P8.7	3	4	P9.0
P9.1	5	6	P8.4
P8.3	7	8	P8.2
P5.3	9	10	P9.2
P9.3	11	12	P6.2
P6.3	13	14	P7.3
P7.2	15	16	P7.1
P7.0	17	18	P9.4
P9.5	19	20	P9.6
P9.7	21	22	P8.0
P7.5	23	24	P7.4
P7.7	25	26	P7.6
P10.1	27	28	P10.0
P10.3	29	30	P10.2
P10.5	31	32	P10.4
+5V	33	34	+5V
+3V3	35	36	+3V3
XDS-GND	37	38	XDS-GND

D

XDS110-ET <----> LaunchPad

XDS110	Target
2	1
4	3
5	5
6	7
8	9
10	11
12	13
14	15
16	17
18	19
20	

J101

XDSET_GND	2	GND
XDSET_VBUS	4	5V
XDSET_VCCTARGET	5	3V3
XDSET_TXD	8	RXD
XDSET_RXD	10	TXD
XDSET_RESET_OUT	12	RST
XDSET_TMS_SWDIO	14	TMS_SWDIO
XDSET_TCK_SWCLK	16	TCK_SWCLK
XDSET_TDO_SWO	18	TDO_SWO
XDSET_TDI	20	TDI

D

Edge Connector for Unused Pin Access

J5

P8.6	1	2	P8.5
P8.7	3	4	P9.0
P9.1	5	6	P8.4
P8.3	7	8	P8.2
P5.3	9	10	P9.2
P9.3	11	12	P6.2
P6.3	13	14	P7.3
P7.2	15	16	P7.1
P7.0	17	18	P9.4
P9.5	19	20	P9.6
P9.7	21	22	P8.0
P7.5	23	24	P7.4
P7.7	25	26	P7.6
P10.1	27	28	P10.0
P10.3	29	30	P10.2
P10.5	31	32	P10.4
+5V	33	34	+5V
+3V3	35	36	+3V3
XDS-GND	37	38	XDS-GND

D

XDS110-ET <----> LaunchPad

XDS110	Target
2	1
4	3
5	5
6	7
8	9
10	11
12	13
14	15
16	17
18	19
20	

J101

XDSET_GND	2	GND
XDSET_VBUS	4	5V
XDSET_VCCTARGET	5	3V3
XDSET_TXD	8	RXD
XDSET_RXD	10	TXD
XDSET_RESET_OUT	12	RST
XDSET_TMS_SWDIO	14	TMS_SWDIO
XDSET_TCK_SWCLK	16	TCK_SWCLK
XDSET_TDO_SWO	18	TDO_SWO
XDSET_TDI	20	TDI

D

Edge Connector for Unused Pin Access

J5

P8.6	1	2	P8.5
P8.7	3	4	P9.0
P9.1	5	6	P8.4
P8.3	7	8	P8.2
P5.3	9	10	P9.2
P9.3	11	12	P6.2
P6.3	13	14	P7.3
P7.2	15	16	P7.1
P7.0	17	18	P9.4
P9.5	19	20	P9.6
P9.7	21	22	P8.0
P7.5	23	24	P7.4
P7.7	25	26	P7.6
P10.1	27	28	P10.0
P10.3	29	30	P10.2
P10.5	31	32	P10.4
+5V	33	34	+5V
+3V3	35	36	+3V3
XDS-GND	37	38	XDS-GND

D

XDS110-ET <----> LaunchPad

XDS110	Target
2	1
4	3
5	5
6	7
8	9
10	11
12	13
14	15
16	17
18	19
20	

J101

XDSET_GND	2	GND
XDSET_VBUS	4	5V
XDSET_VCCTARGET	5	3V3
XDSET_TXD	8	RXD
XDSET_RXD	10	TXD
XDSET_RESET_OUT	12	RST
XDSET_TMS_SWDIO	14	TMS_SWDIO
XDSET_TCK_SWCLK	16	TCK_SWCLK
XDSET_TDO_SWO	18	TDO_SWO
XDSET_TDI	20	TDI

D

Edge Connector for Unused Pin Access

J5

P8.6	1	2	P8.5
P8.7	3	4	P9.0
P9.1	5	6	P8.4
P8.3	7	8	P8.2
P5.3	9	10	P9.2
P9.3	11	12	P6.2
P6.3	13	14	P7.3
P7.2	15	16	P7.1
P7.0	17	18	P9.4
P9.5	19	20	P9.6
P9.7	21	22	P8.0
P7.5	23	24	P7.4
P7.7	25	26	P7.6
P10.1	27	28	P10.0
P10.3	29	30	P10.2
P10.5	31	32	P10.4
+5V	33	34	+5V
+3V3	35	36	+3V3
XDS-GND	37	38	XDS-GND

D

XDS110-ET <----> LaunchPad

XDS110	Target
2	1
4	3
5	5
6	7
8	9
10	11
12	13
14	15
16	17
18	19
20	

J101

XDSET_GND	2	GND
XDSET_VBUS	4	5V
XDSET_VCCTARGET	5	3V3
XDSET_TXD	8	RXD
XDSET_RXD	10	TXD
XDSET_RESET_OUT	12	RST
XDSET_TMS_SWDIO	14	TMS_SWDIO
XDSET_TCK_SWCLK	16	TCK_SWCLK
XDSET_TDO_SWO	18	TDO_SWO
XDSET_TDI	20	TDI

D

Edge Connector for Unused Pin Access

J5

P8.6	1	2	P8.5
P8.7	3	4	P9.0
P9.1	5	6	P8.4
P8.3	7	8	P8.2
P5.3	9	10	P9.2
P9.3	11	12	P6.2
P6.3	13	14	P7.3
P7.2	15	16	P7.1
P7.0	17	18	P9.4
P9.5	19	20	P9.6
P9.7	21	22	P8.0
P7.5	23	24	P7.4
P7.7	25	26	P7.6
P10.1	27	28	P10.0
P10.3	29	30	P10.2
P10.5	31	32	P10.4
+5V	33	34	+5V
+3V3	35	36	+3V3
XDS-GND	37	38	XDS-GND

D

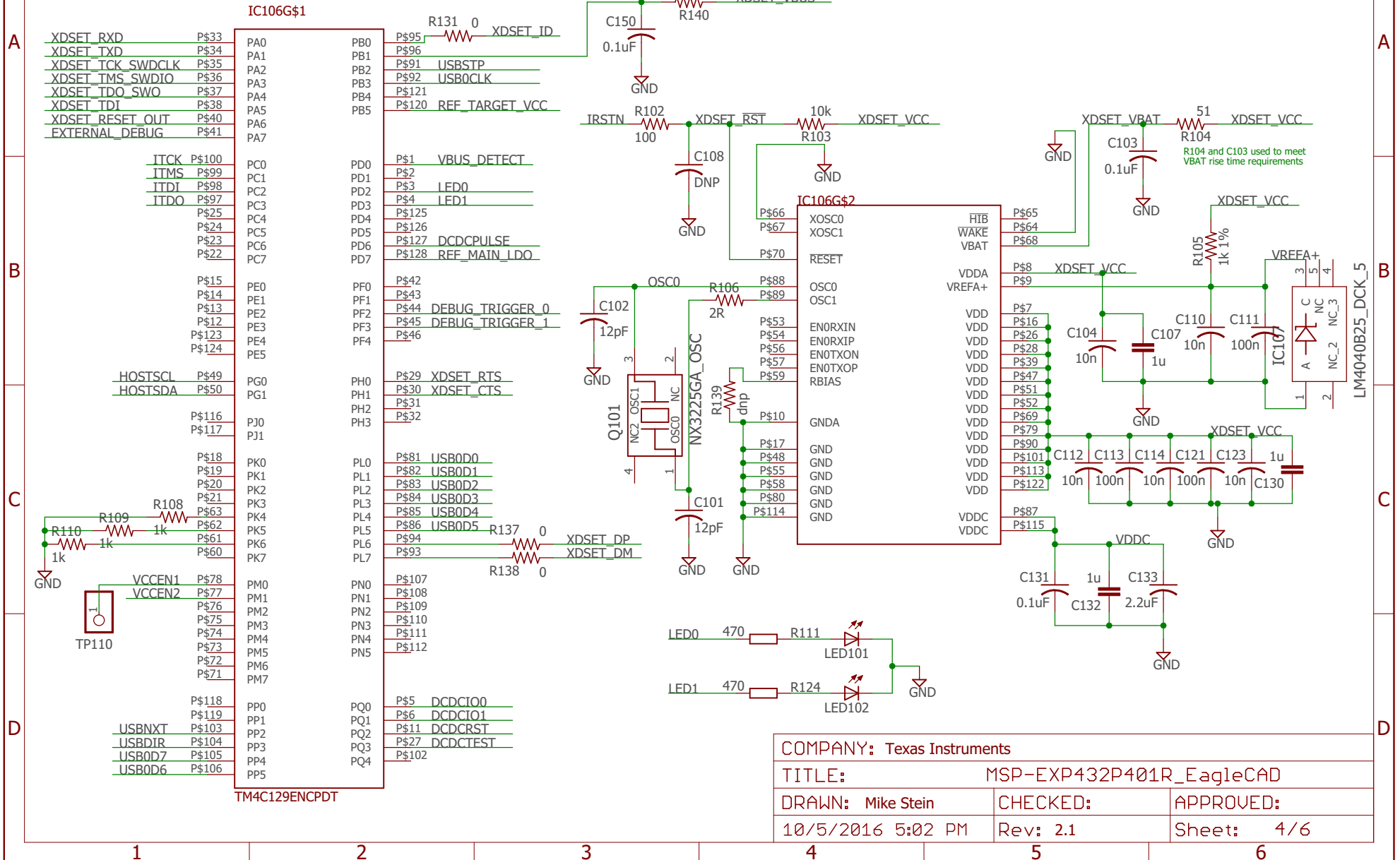
XDS110-ET <----> LaunchPad

XDS110	Target
2	1
4	3
5	5
6	7
8	9
10	11
12	13
14	15
16	17
18	19
20	

J101

XDSET_GND	2	GND
XDSET_VBUS	4	5V
XDSET_VCCTARGET	5	3V3
XDSET_TXD	8	RXD
XDSET_RXD	10	TXD
XDSET_RESET_OUT	12	RST
XDSET_TMS_SWDIO		

XDS110 Debug Probe



EnergyTrace Software-controlled DCDC converter

COMPANY: Texas Instruments

TITLE: MSP-EXP432P401R_EagleCAD

DRAWN: Mike Stein

CHECKED:

APPROVED:

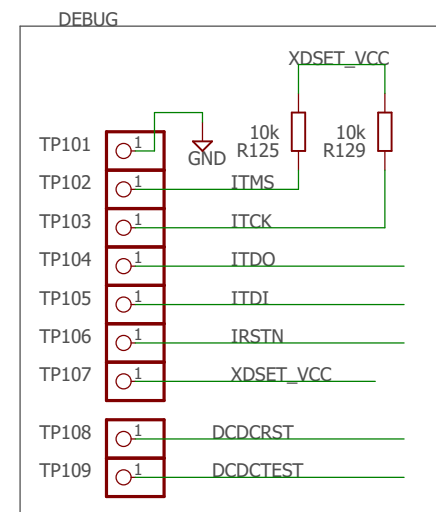
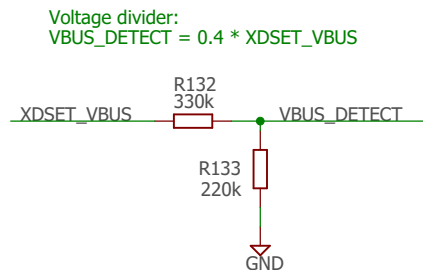
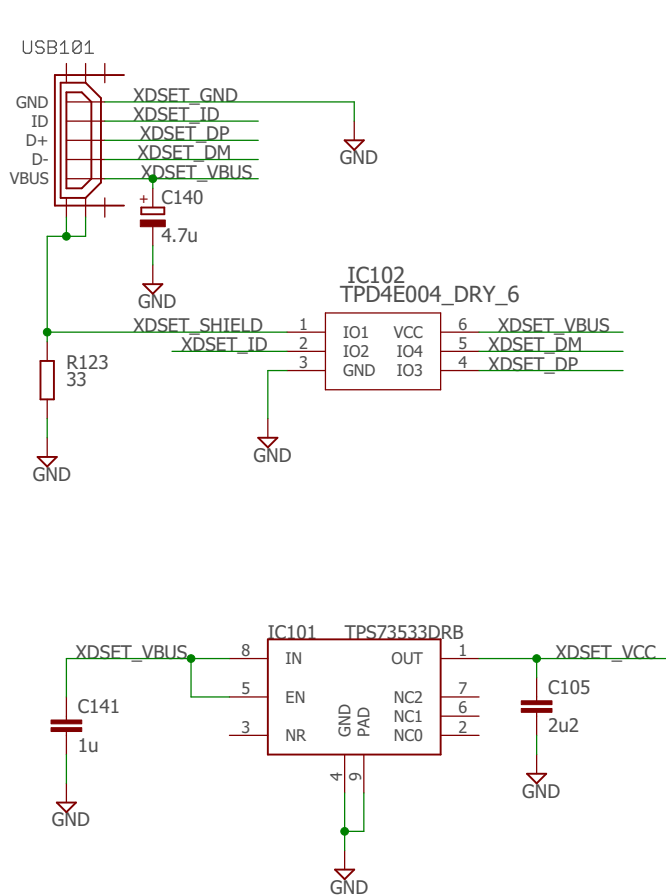
10/5/2016 5:02 PM

Rev: 2.1

Sheet: 5/6

COMPANY: Texas Instruments		
TITLE: MSP-EXP432P401R_EagleCAD		
DRAWN: Mike Stein	CHECKED:	APPROVED:
10/5/2016 5:02 PM	Rev: 2.1	Sheet: 5/6

USB interface and power supply



COMPANY: Texas Instruments		
TITLE: MSP-EXP432P401R_EagleCAD		
DRAWN: Mike Stein	CHECKED:	APPROVED:
10/5/2016 5:02 PM	Rev: 2.1	Sheet: 6/6